

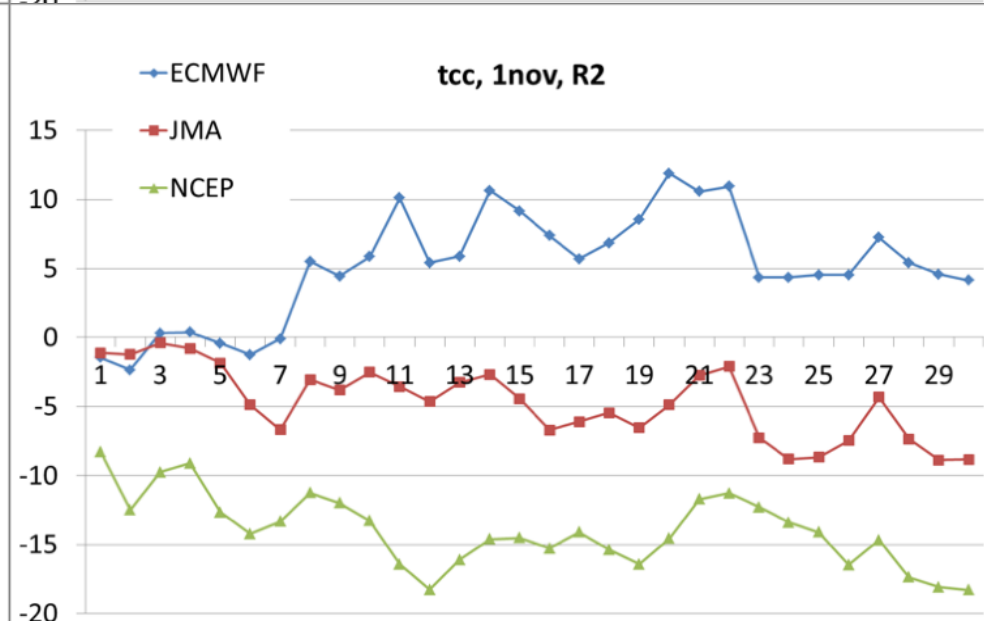
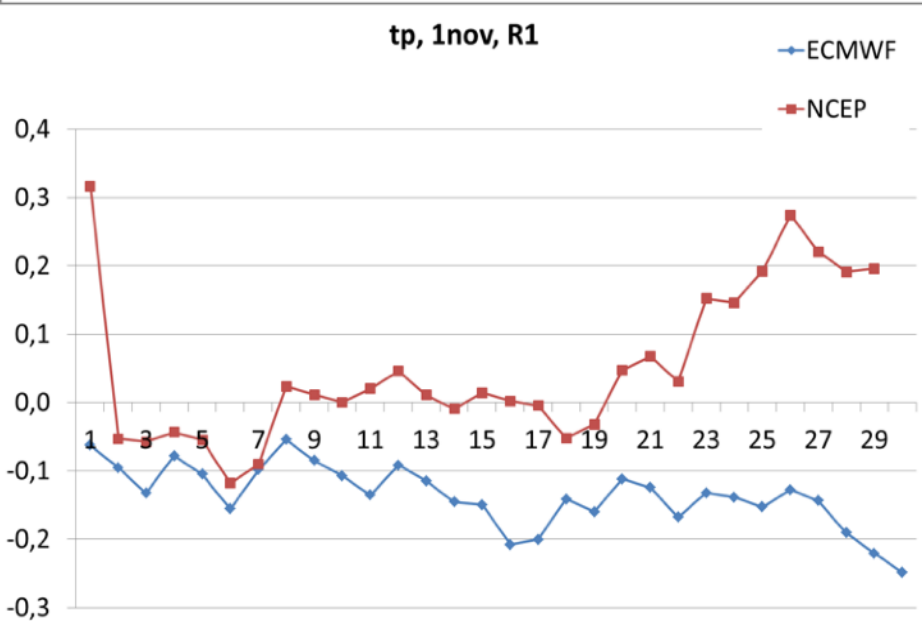
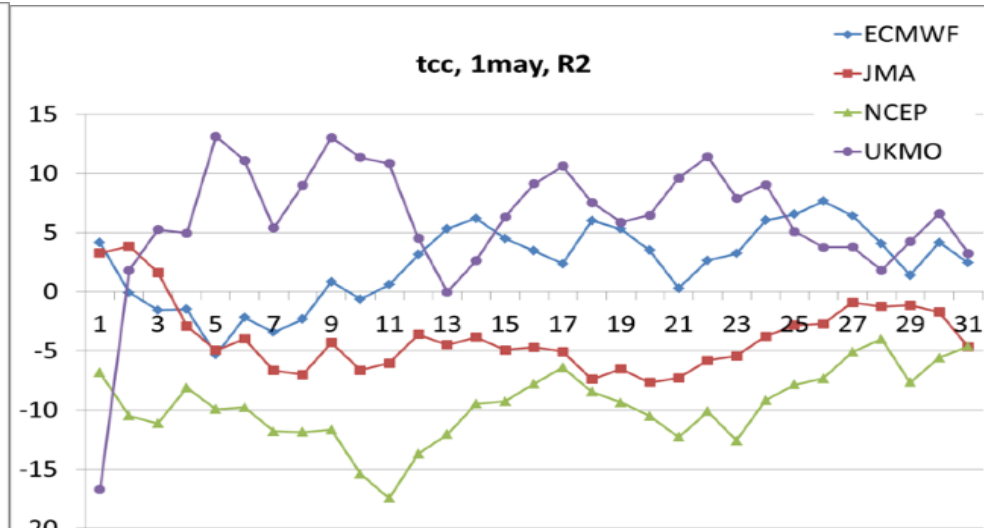
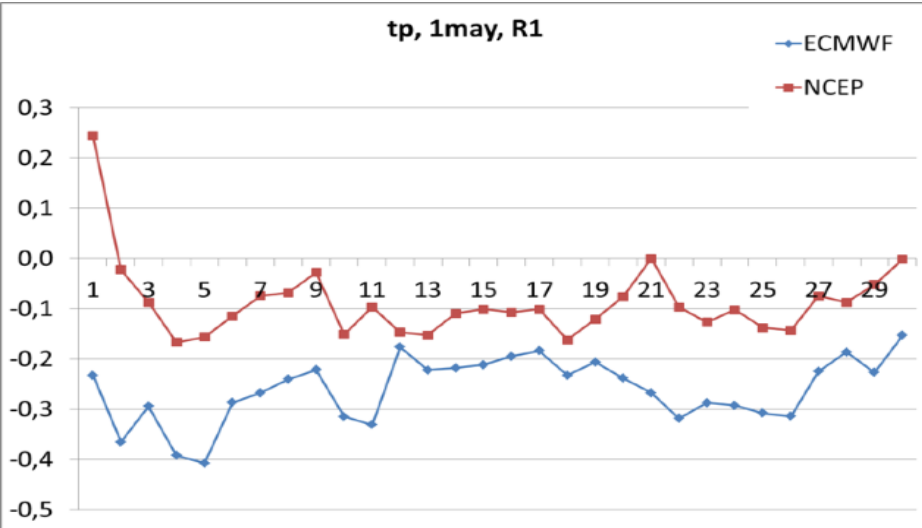
**Subseasonal part of the Long-Range  
Forecast Transient Intercomparison Project:  
Coordinated diagnostics and metrics**

Mikhail Tolstykh, William Merryfield,  
Tatiana Krasjuk

WGSIP18, Dakar, 23-25 Nov 2016

- Creating an archive of daily hindcast climatologies produced by coupled models from the WMO S2S project database (<http://s2sprediction.net/static/database>) for some variables.
- This subset can be then used to inform on transient behavior of initialized coupled prediction during 1<sup>st</sup> forecast month (+ 2<sup>nd</sup> month in future)
- Starting dates 1<sup>st</sup> of May and 1<sup>st</sup> of November (+/-1day).
- Follows LFRTIP proposal protocol (variables conversion, etc), extracted fields are saved as nc4 files
- Precipitation fields needed to be converted from accumulated to daily values.

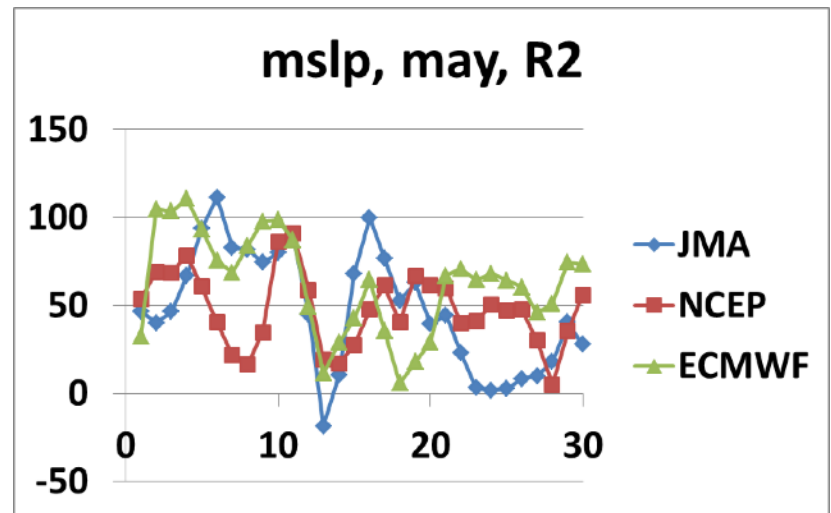
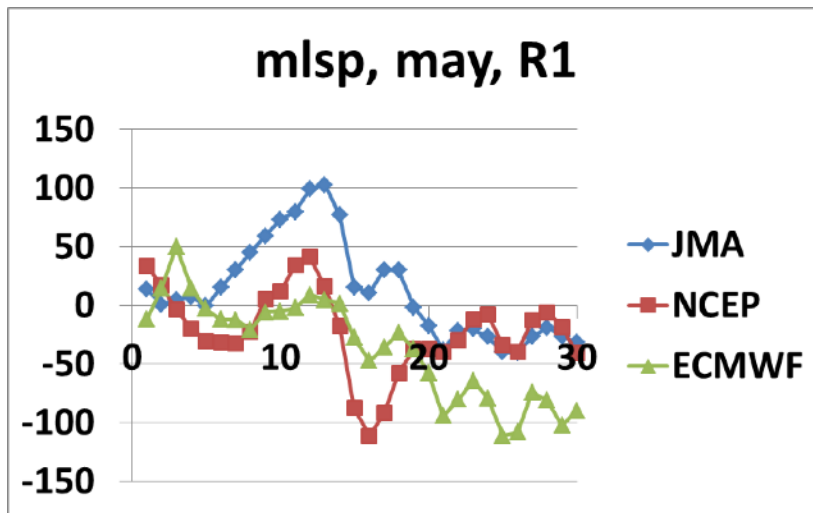
# Averaged over 1996-2010 (1999-2010 for NCEP) daily anomalies w.r.t. reanalysis. Tropical Pacific precip (left) and North Atlantic total cloud cover (right) anomalies



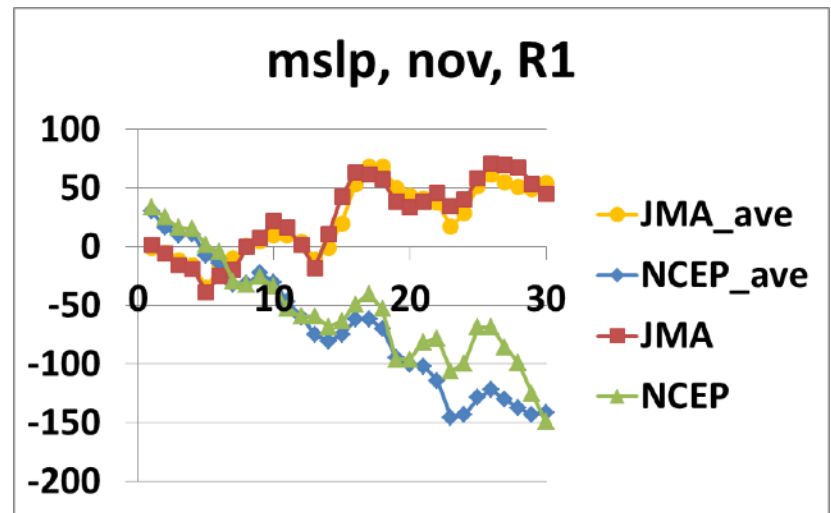
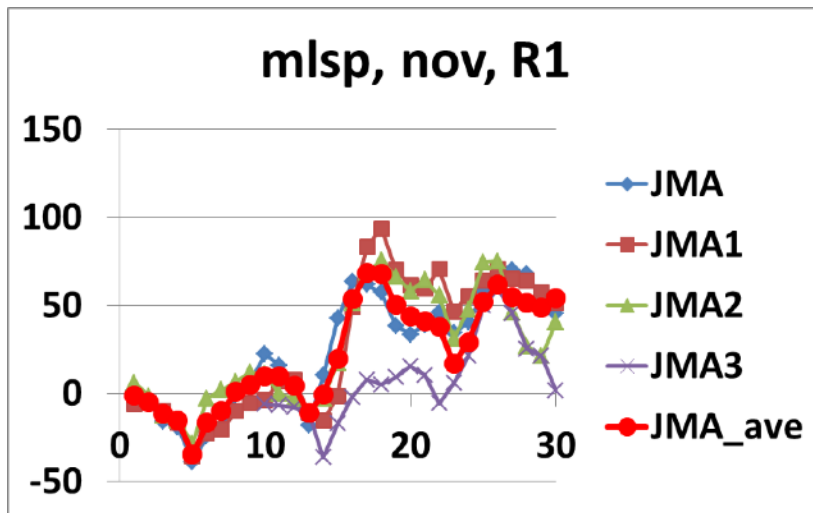
# Processing S2S reforecasts first month data for selected fields

- SST, total precipitation, total cloud cover, sea level pressure.
- Control and in most cases perturbed forecasts
- Precipitation fields needed to be converted from accumulated to daily values.
- ECMWF (1996-2015), NCEP (1999-2010), UKMO (1996-2015), JMA (1996-2010) are processed for start dates (closest to) 01 May and 01 November.
- All fields are saved as NetCDF4 files.

# Difference between regions



# Ensemble vs control member anomaly



# Remarks

- Different number of ensemble members for every center (from 2 to 10).
- Different periods for reforecasts. The common one is from 1999 to 2010.
- Sea level pressure field is currently absent for UKMO reforecasts.

**Thank you for attention!**