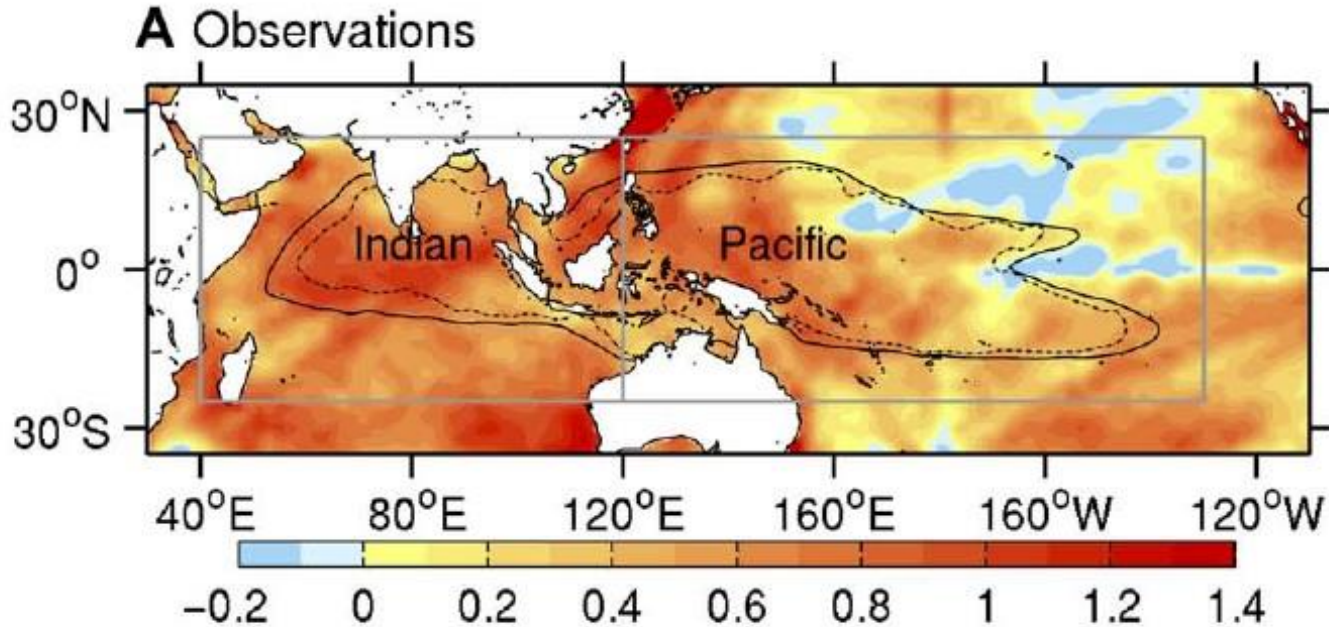


Indo-Pacific Warm Pool Expansion And EASM

Inhong Park

Climate Change Research Lab. (CCRL)
Pohang University of Science & Technology (POSTECH)

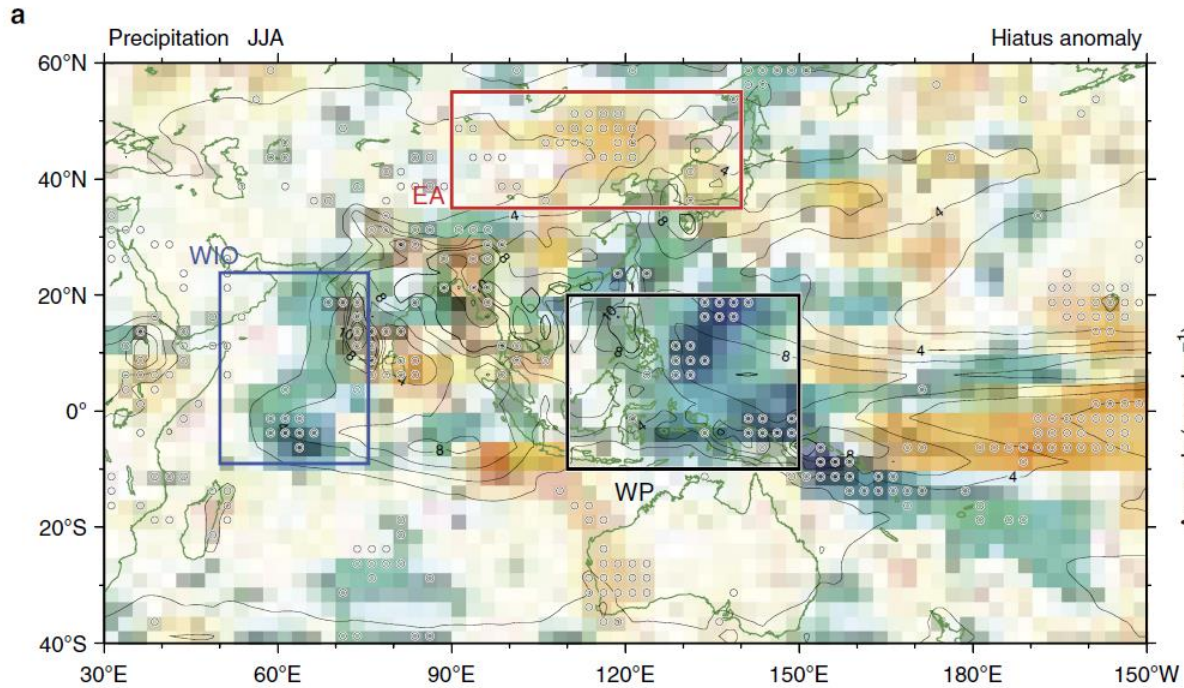
Observed SST Trend & Warm Pool Expansion



(solid line : 2000-2012, dash line : 1953-1999)

	Indo-Pacific	Indian Ocean	Pacific Ocean
Intensity	0.30°C/60yr	0.34°C/60yr	0.33°C/60yr
Area	32.2%/60yr	51.2%/60yr	21.6%/60yr

Indo-Pacific warming cause EASM change



- Indian Ocean warming → Strong EASM
- Pacific Ocean warming → Weaken EASM
- Gradient between Indian and Pacific also important

- Understanding tropical warmpool and find teleconnection with East Asia!

