

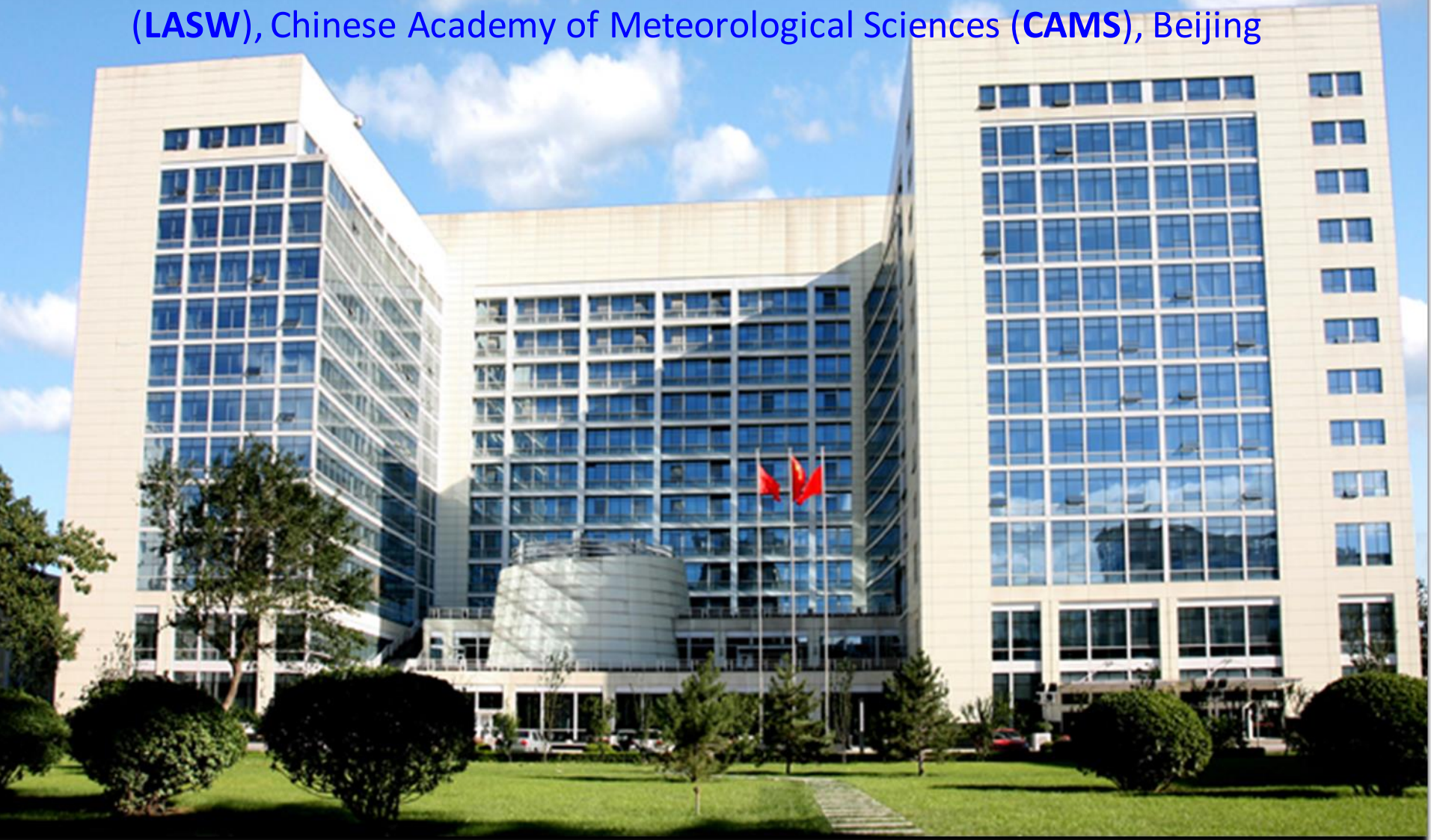


灾害天气国家重点实验室

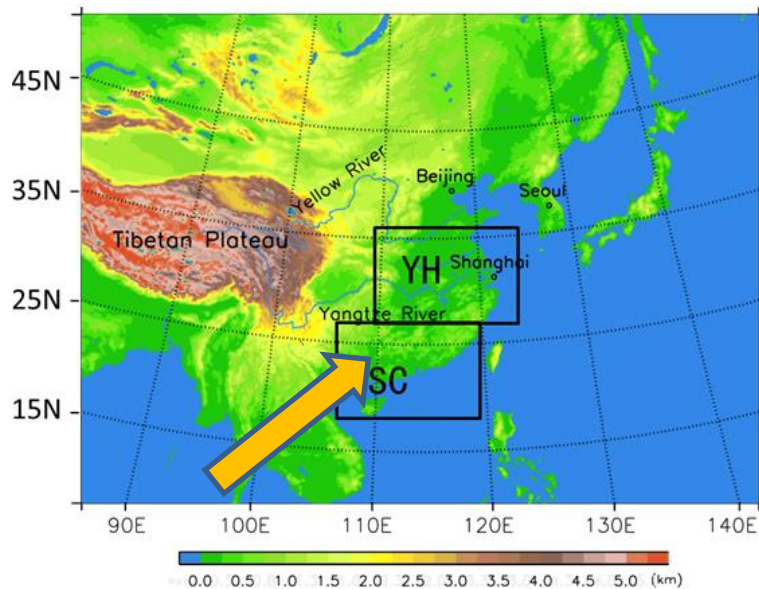
STATE KEY LABORATORY OF SEVERE WEATHER(LASW)



- **Yangruixue CHEN (chenyang3222@163.com)**
- PhD student (expected 2018) of State Key Laboratory of Severe Weather (**LASW**), Chinese Academy of Meteorological Sciences (**CAMS**), Beijing

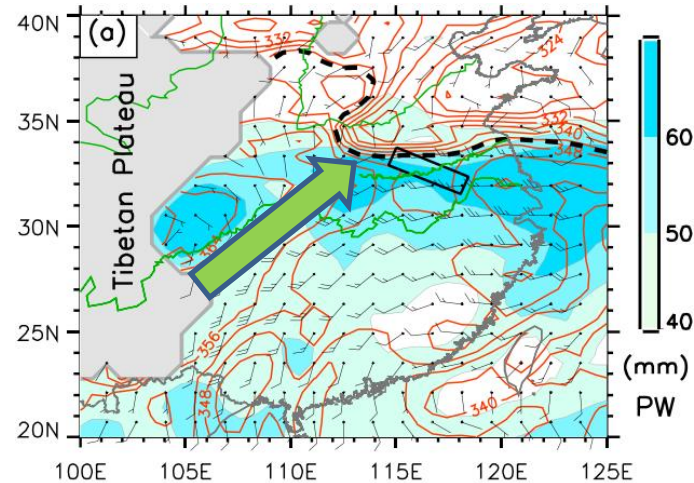
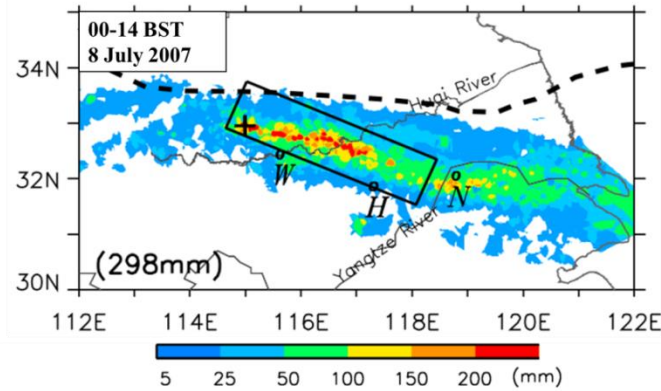


- **Yangruixue CHEN (chenyang3222@163.com)**
- PhD student (expected 2018) of State Key Laboratory of Severe Weather (**LASW**), Chinese Academy of Meteorological Sciences (**CAMS**), Beijing
- My research interest incorporate the **predictability and mechanisms of mesoscale convective systems (MCSs) producing the heavy rainfall.**
- I am currently working on the **organizational modes of MCSs over South China.**



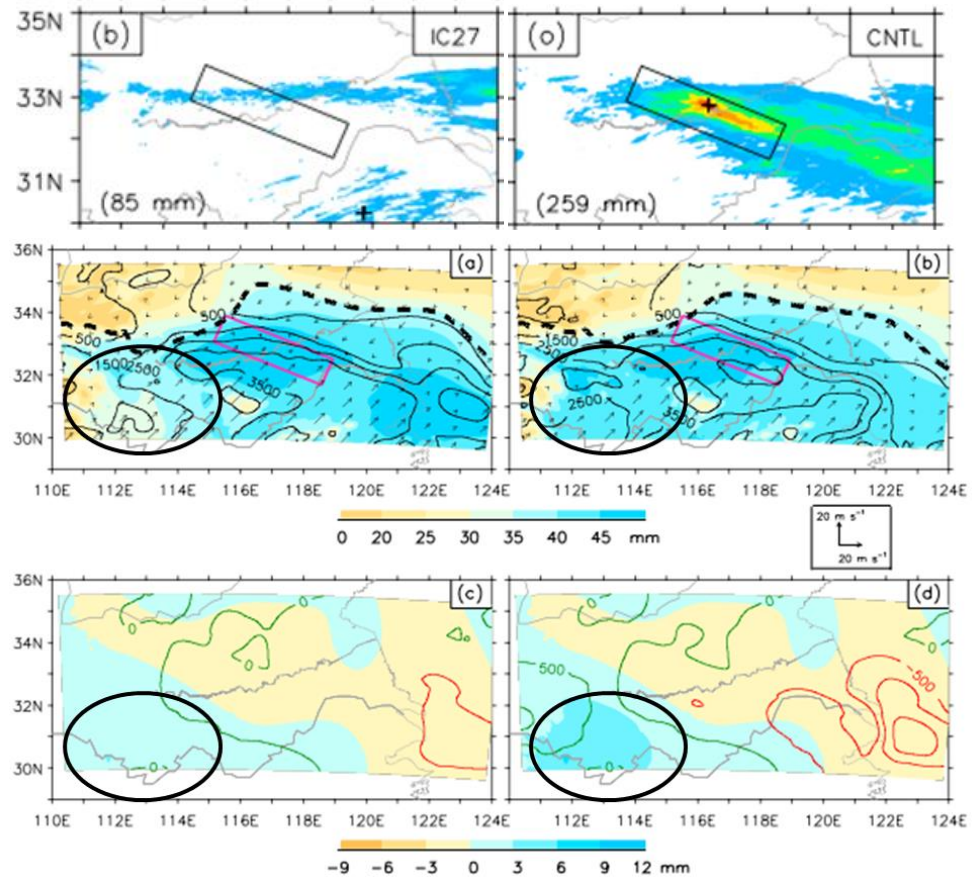
- **The rainy season of China is associated with the EASM.**
- **Monsoon flow provide the energy and water vapor for the development of MCSs.**

Predictability of an extreme-rainfall-producing mesoscale convective system along the Meiyu front in East China



Less skillful

skillful



Water vapor and CAPE of the inflow air are important!

Thank you !

(Luo and Chen, JGR, 2015)