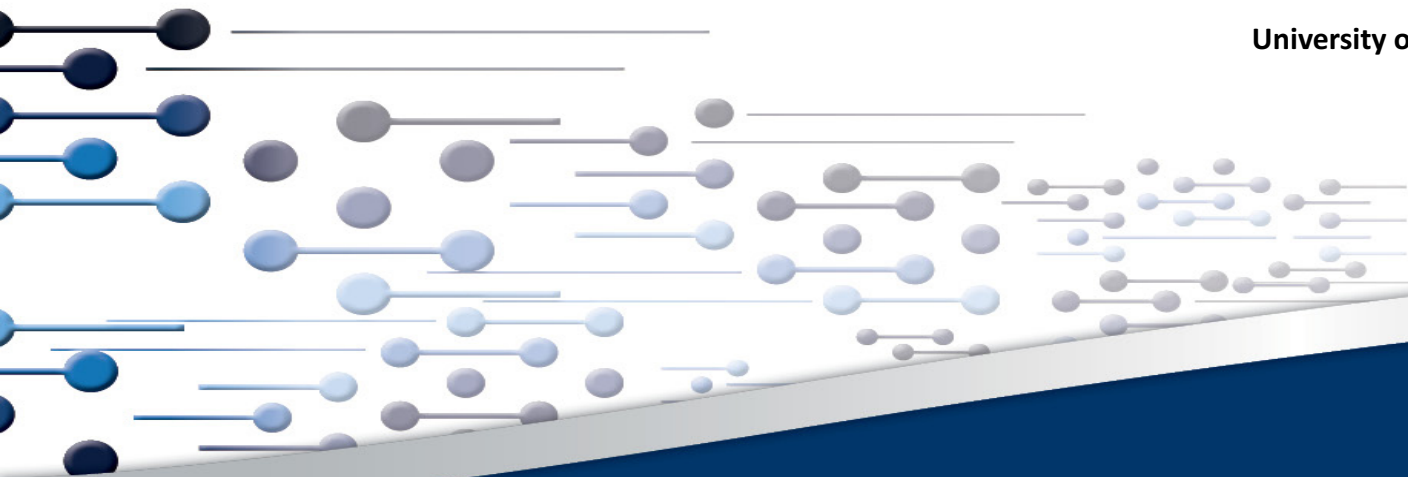


CSIR Research activities update

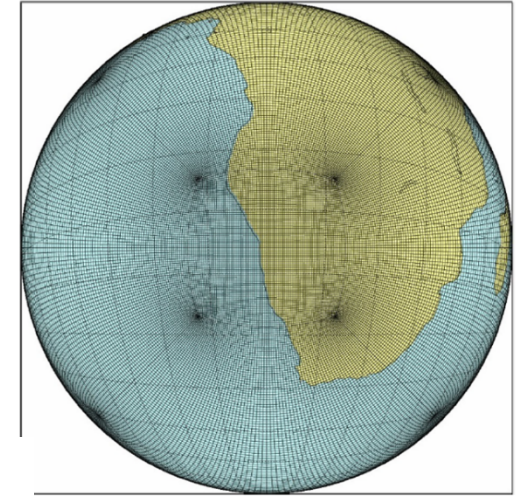
Asmerom F. Beraki

CSIR – Smart Places, Global Change, Climate and Air Quality Modelling
and
University of Pretoria, GGMD

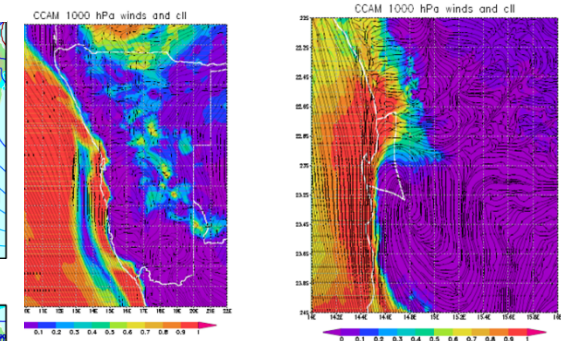
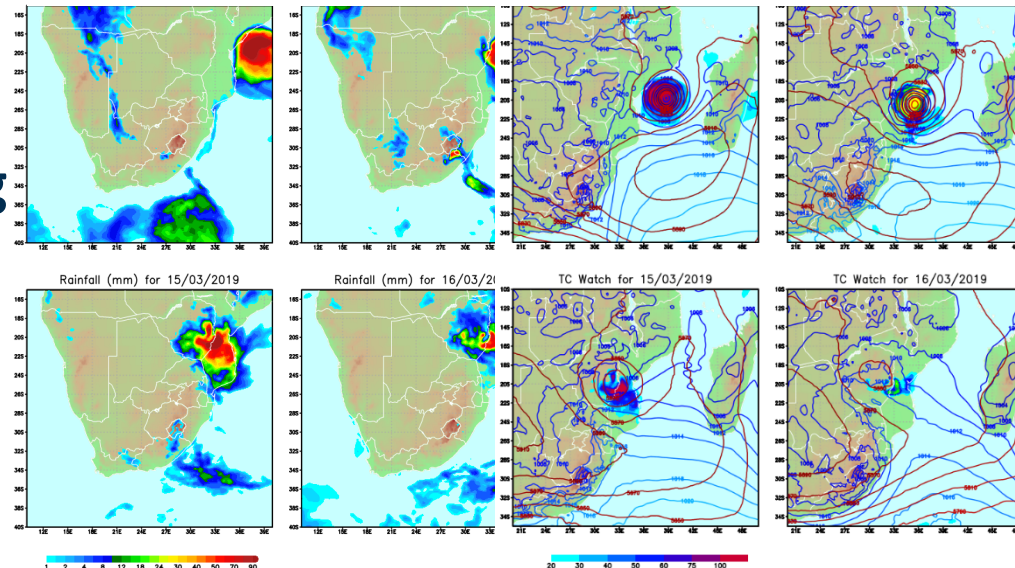


Seamless forecasting system

- Coupled ocean, atmosphere, land-surface and dynamic sea-ice models all cast on a cube-based grid and can be applied either at quasi-uniform horizontal resolution to function as a global climate model, or in stretched-grid mode to function as a high-resolution regional climate model.
- A prognostic aerosol scheme applied consistently with the emission inventories and radiative forcing specifications of the Coupled Model Intercomparison Project Phase Five (CMIP5) and a dynamic river routing scheme climate model.
- Realistic GH and O3 forcings
- Supports Seamless forecasting

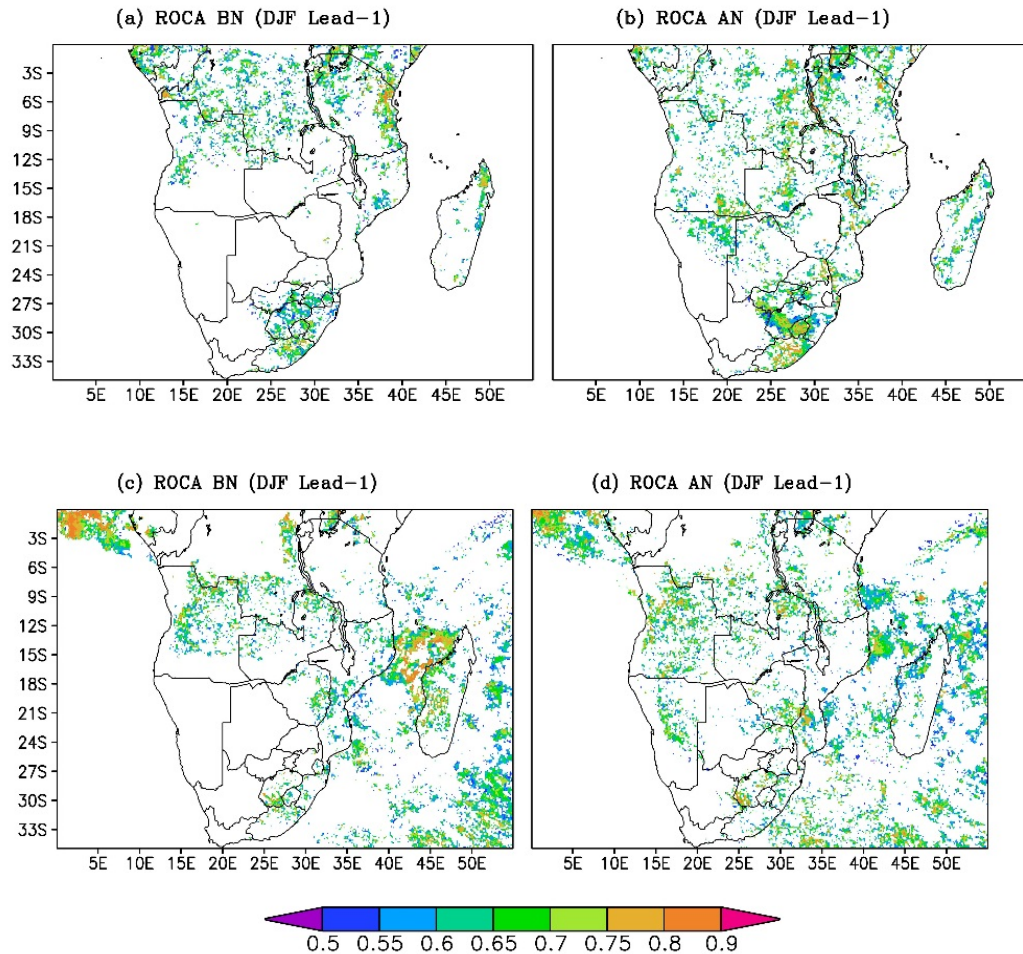


Tropical cyclone Idai (issued on 13 March)



14 March 2019: Wikipedia

New Climate prediction System (mega-resolution)



CSIR NRE CLIMATE PREDICTION SYSTEM

CCAM-CABLE 8km (Seasonal timescale)

Most likely Category of Rainfall
Forecast Period: Dec 2017 – Feb 2018

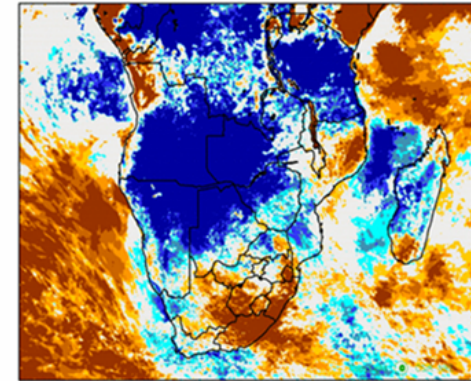
No Significance Test Applied

Ensemble size 12
Last Updated 16 Nov 2017

----- Dry Tendency

Wet Tendency -----

70-100% 60-70% 50-60% 33-50% OTHERS 33-50% 50-60% 60-70% 70-100%



CSIR NRE CLIMATE PREDICTION SYSTEM

CCAM-CABLE 8km (Extended-Range timescale)

Most likely Category of Rainfall
Forecast Period: 20 Nov 2017 – 09 Dec 2017

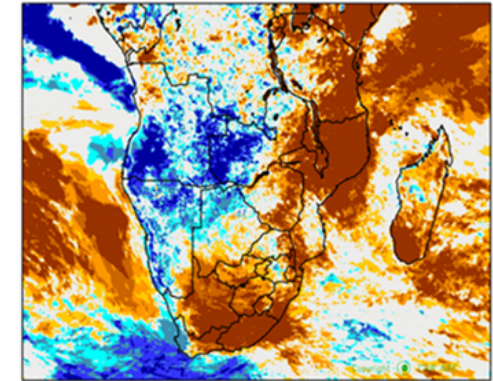
No Significance Test Applied

Ensemble size 12
Last Updated 04

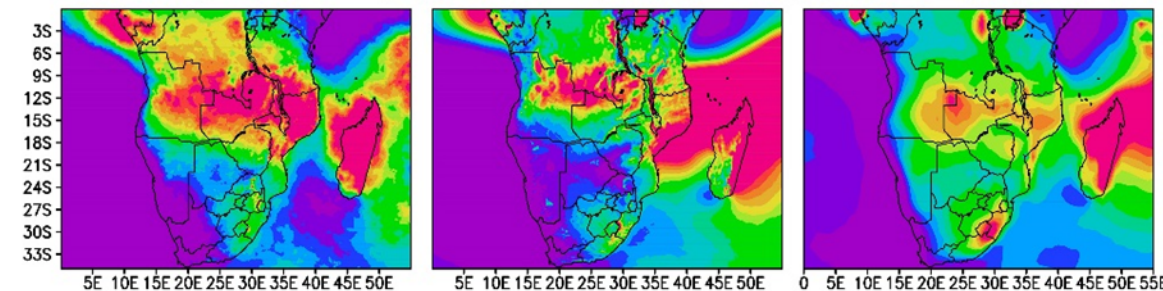
----- Dry Tendency

Wet Tendency -----

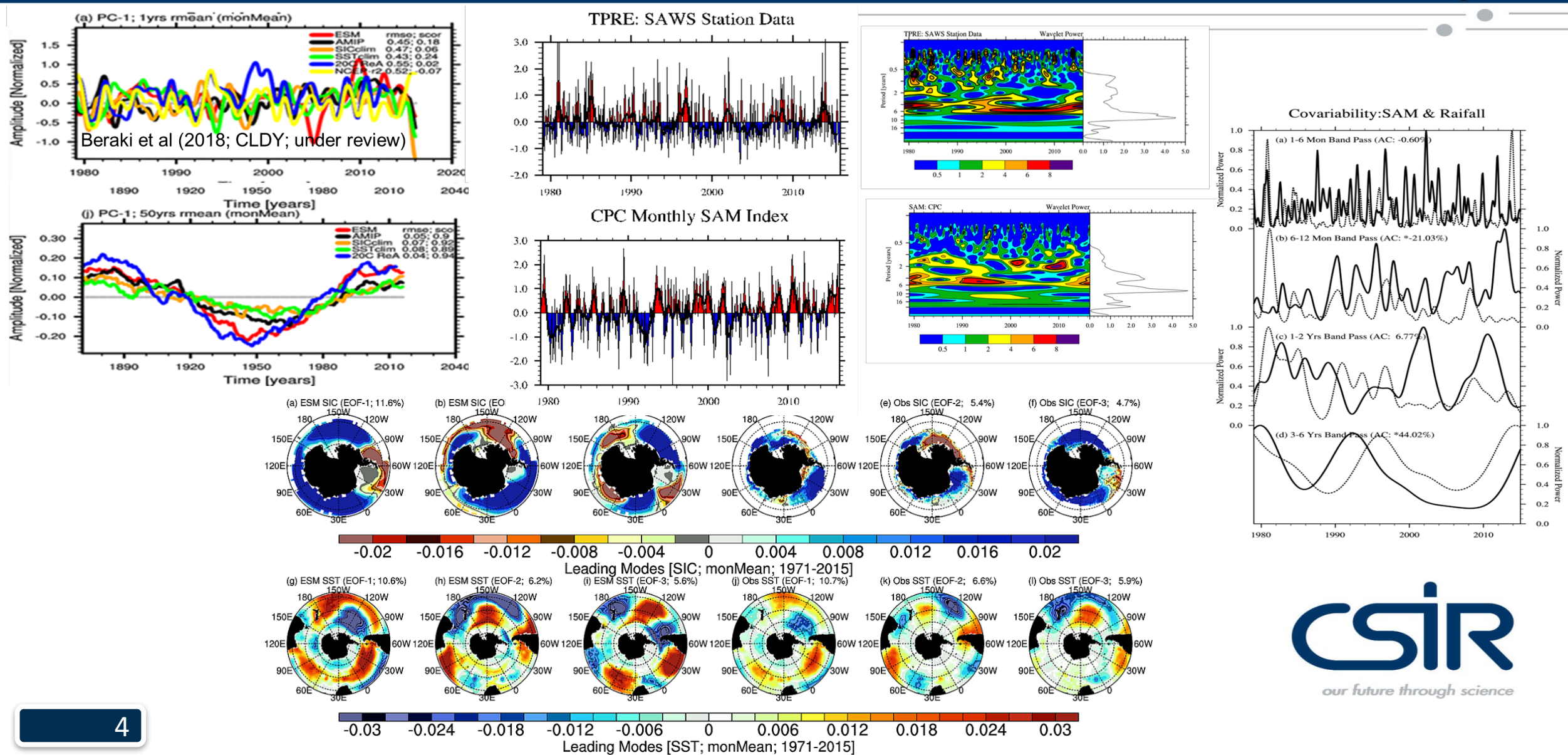
70-100% 60-70% 50-60% 33-50% OTHERS 33-50% 50-60% 60-70% 70-100%



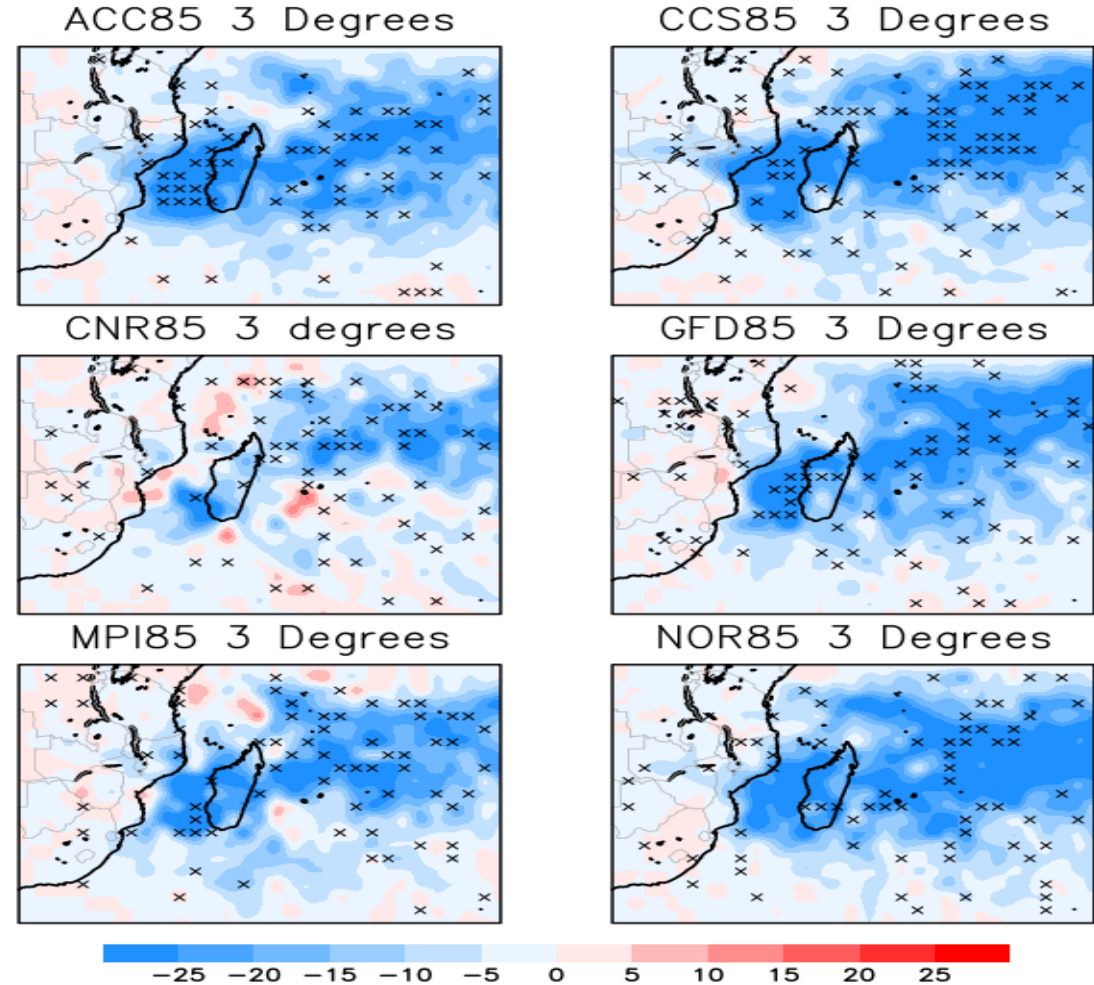
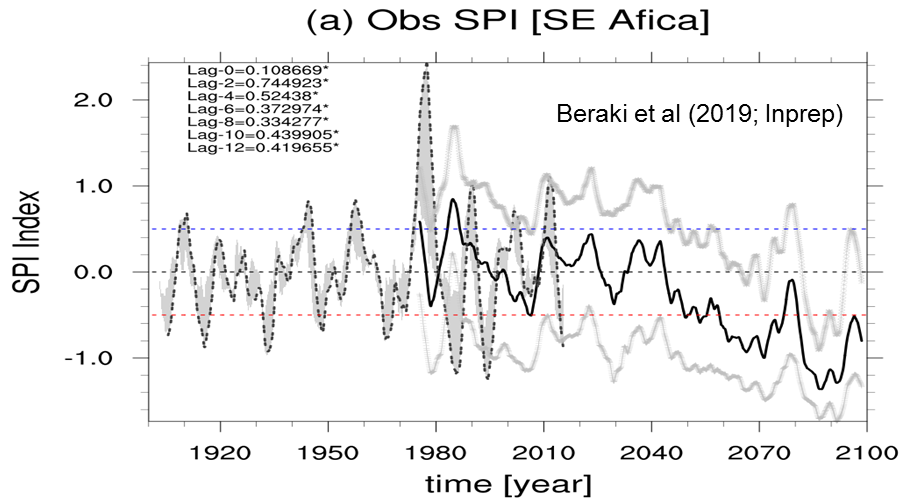
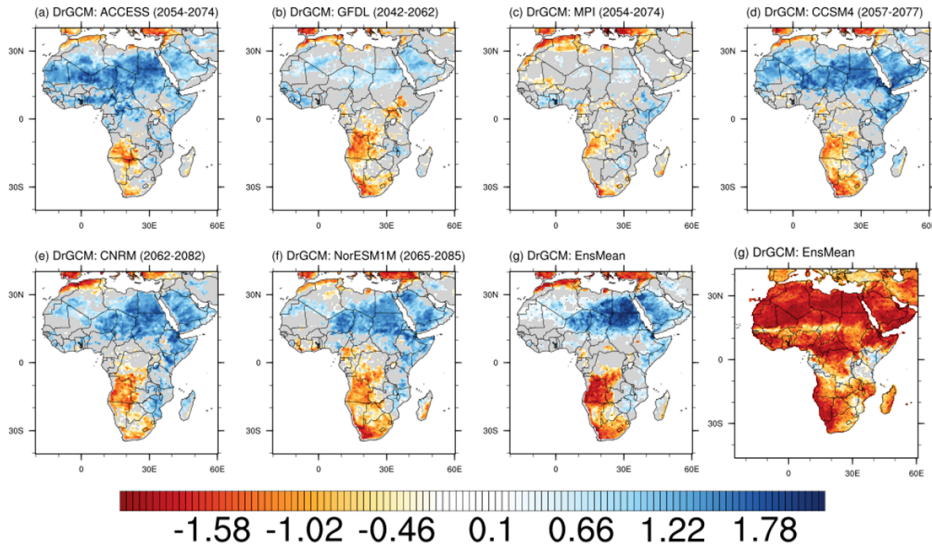
(c) CHIRP (clim;2000-2014) (d) CCAM C192 (clim;2000-2014) (e) CCAM C96 (clim;2000-2014)



Role of coupled interactions and Feedbacks



Climate change impacts on extremes: moisture budget and Tropical Cyclone



Muthige et al. (2018; *Environ. Res. Lett.*)