

Pan-GEWEX & Pan-CLIVAR meeting

Sonia Seneviratne, Co-Chair SSG

WGSIP meeting, 12.3.2014



GEWEX Science Conference & Pan-GEWEX meeting

Monday-Thursday 14.7-17.7: **GEWEX Science Conference**, The Hague, Netherlands (<http://gewex.org/2014conf/home.html>)

Thursday-Friday 17.7-18.7: **Pan-GEWEX meeting**

- Thursday, 17.7, afternoon: Pan-GEWEX
- Friday 18.7, morning: Joint Pan-GEWEX and Pan-CLIVAR meeting

Saturday 19.7, morning: **GEWEX SSG meeting and joint GEWEX/CLIVAR SSG meeting**

GEWEX Science Conference

Monday-Thursday 14.7-17.7: **GEWEX Science Conference**, The Hague, Netherlands (<http://gewex.org/2014conf/home.html>)

Several sessions including:

- **Modeling, predicting, and attributing climate extremes**
Gabi Hegerl, Adam Scaife, Sonia Seneviratne
- **Progress and challenges for predicting monsoon precipitation**
Harry Hendon, Dave Gochis, Jun Matsumoto
- **The role of land parameters (and land cover change) on weather and climate prediction**
Shinjiro Kanae, Mike Ek, Andy Pitman

Pan-GEWEX meeting

Thursday, 17.7, Plenary 14h00-17h10

GEWEX “New themes”

Land use and land cover modeling within CMIP6 (LUCID, LUMIP, GSWP3)

Invited speakers: George Hurtt, Nathalie de Noblet-Ducoudré

Discussion leads: Dave Lawrence, Aaron Boone

High-resolution modelling

Invited speakers: Roy Rasmussen, Pier-Luigi Vidale

Discussion leads: Steve Klein, Jon Petch

Carbon-water cycle interactions

Invited speakers: Philippe Ciais, Christian Frankenberg

Discussion leads: Eleanor Blyth, Markus Reichstein

Surface energy and water balances

Invited speakers: Martin Wild, Justin Sheffield

Discussion leads: Joerg Schulz, Carlos Jimenez

Water isotopes

Invited speakers: David Noone, Huub Savenije

Discussion leads: Jason Evans, Bart van den Hurk

Joint Pan-GEWEX/Pan-CLIVAR meeting

Friday, 18.7, Plenary 8h30-13h00 - GEWEX/CLIVAR “joint themes”

10mn: Overview on GEWEX (G. Stephens, S. Seneviratne)

10mn: Overview on CLIVAR (L. Goddard, D. Stammer)

1st discussion block: Extreme events (10mn talks, general discussion at the end)

8h50-9h10 Attribution and Prediction of Extremes (X. Zhang, G. Hegerl)

9h10-9h30 Drought (Taikan Oki, Siegfried Schubert)

9h30-10h00 Heavy precipitation (Chris Kummerow, Lisa Alexander, Hayley Fowler)

10h-10h30: Discussion (leads: S. Seneviratne, L. Goddard)

Coffee break: 1030h-11h00

2nd discussion block: Large-scale circulation, predictability, and air-sea fluxes (10mn talks, general discussion at the end)

11h-11h20 Air-Sea Fluxes (S. Gulev, CA Clayson)

11h20-11h40 Monsoons (Peter Webster, Andy Turner)

11h40-12h00 Circulation and climate dynamics (Tapio Schneider, Mat Collins)

12h -12h20 Seasonal to decadal variability and predictability (Paul Dirmeyer, Paco Doblas Reyes)

12h20-12h50: Discussion (leads: D. Stammer, G. Stephens)

12h50-13h00 Closing words (CLIVAR and GEWEX co-chairs)

WGSIP inputs

Interest in GEWEX new themes (e.g high resolution modelling, land use and land cover modelling, surface energy and water balances)?

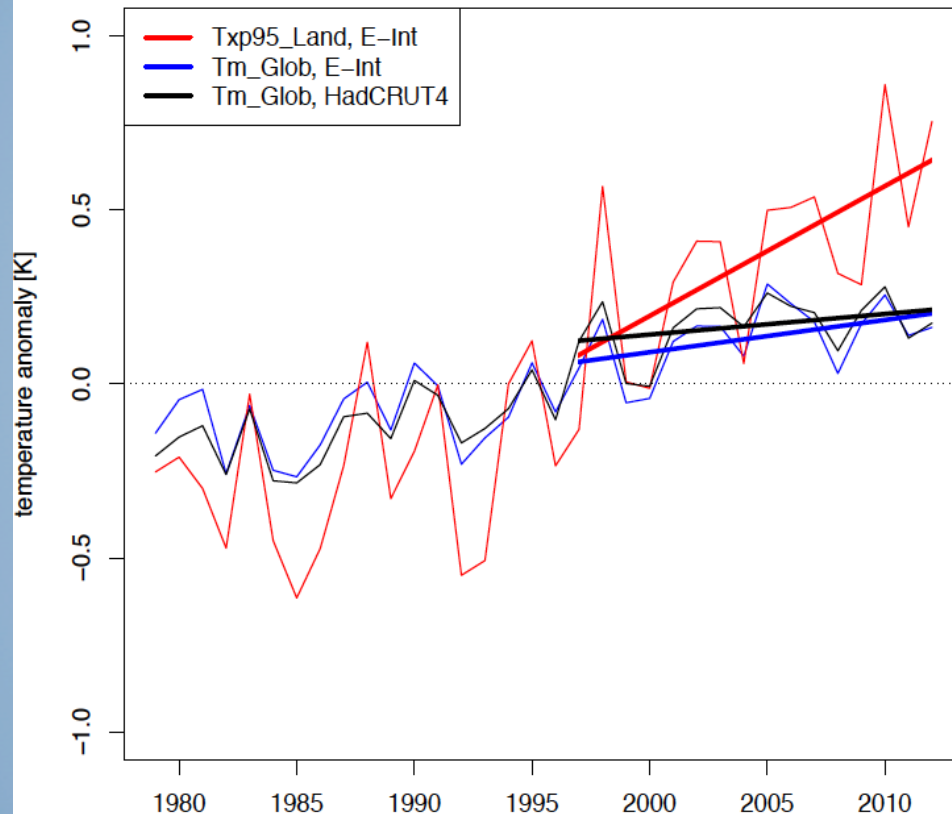
Interest in joint GEWEX/CLIVAR themes (e.g. predictability, monsoons, air-sea fluxes, extremes)?

Climate Extremes (WCRP Grand Challenge)

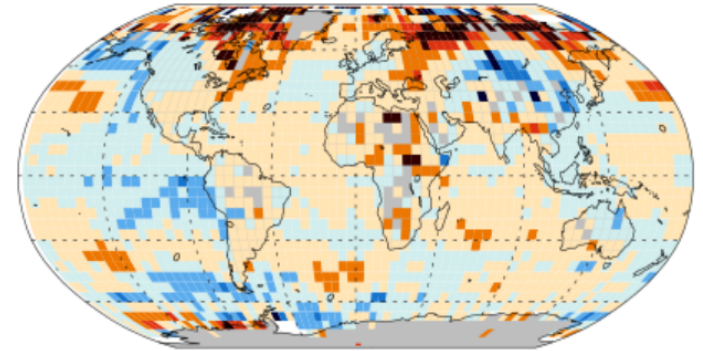
No pause in increase of hot temperature extremes?

1997-2012 tendencies

95th perc TX over land vs mean global T



Tmean, HadCRUT4



Txp95, ERA-Interim

