

# CMIP6: WIP Status Update

A summary of CMIP6 to-date from the WGCM Infrastructure Panel (WIP)

WGCM-24

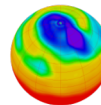
Thursday 9<sup>th</sup> December 2021 - Virtual

**Paul J. Durack**, Matthew Mizielinski  
and the WIP membership



# CMIP: a team sport

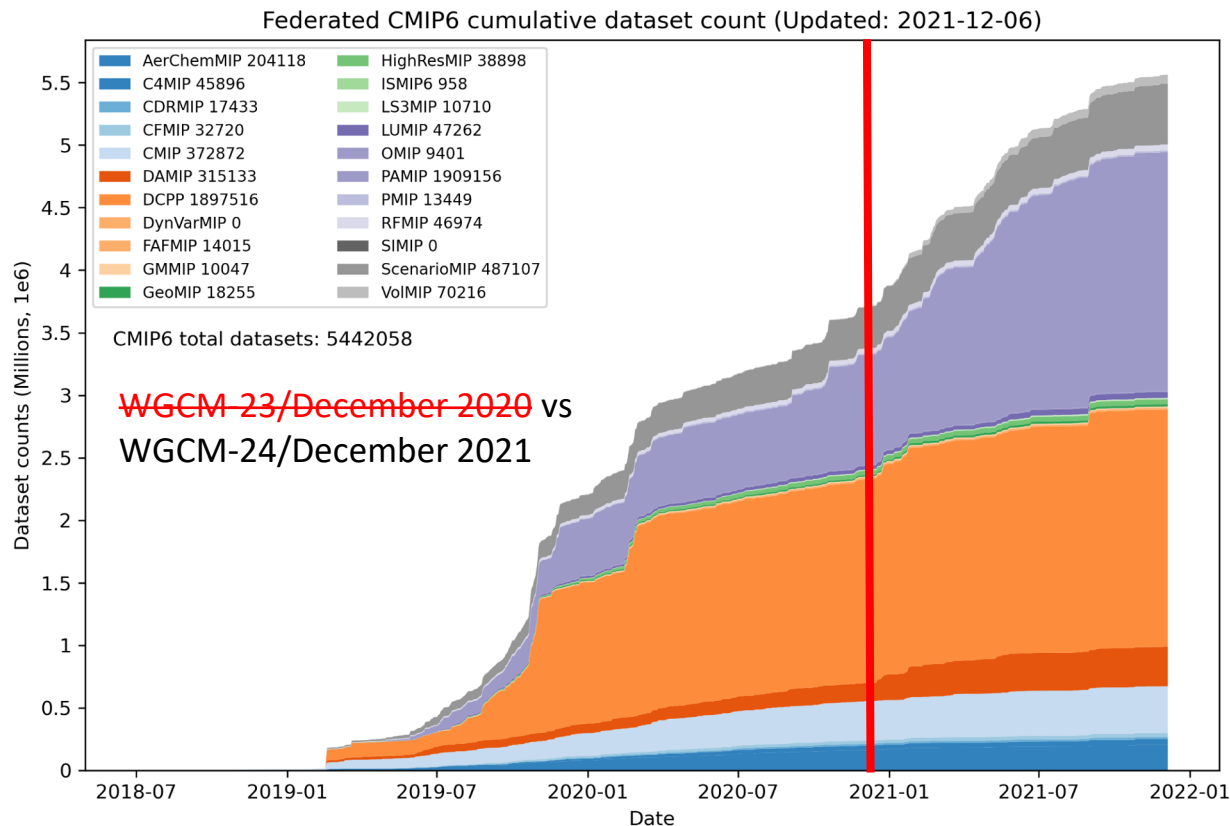
- PCMDI
  - U.S. DOE has provided 32-years of \*MIP support
- ESGF
  - Originated by U.S. DOE
  - Major recent contributions from numerous others
- IS-ENES
  - European contribution to ESGF & CMIP infrastructure
- Numerous other projects and institutions, including DKRZ, IPSL, CEDA, ES-DOC, NASA, NOAA, ...
- 29+ ESGF nodes
- 140 models, 52 institutions representing 26 countries, and many, many more...



+ Every modelling group, every forcing dataset provider, ...

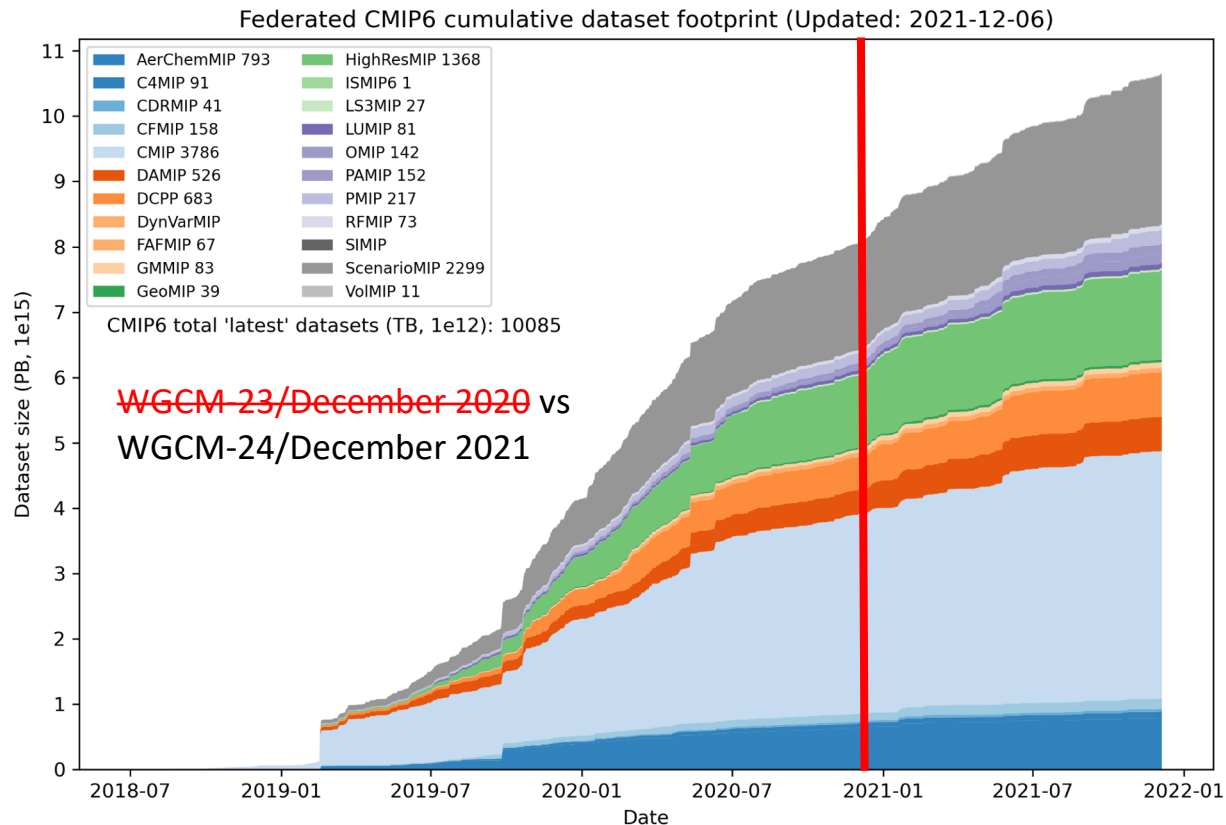
# ESGF Published data

- Over ~~3.7~~ 5.6 million datasets on ESGF across all CMIP6 activities/MIPs
- Delivery has been seamless – thanks to data challenges and ESGF stability testing
- Datasets - unique variable collections per experiment R1P1F



# ESGF Published data

- Over ~~3.7~~ 5.6 million datasets on ESGF across all CMIP6 activities/MIPs
- Delivery has been seamless – thanks to data challenges and ESGF stability testing
- Datasets - unique variable collections per experiment R1P1F
- Footprint – storage units in PBs



# ESGF publication and replication

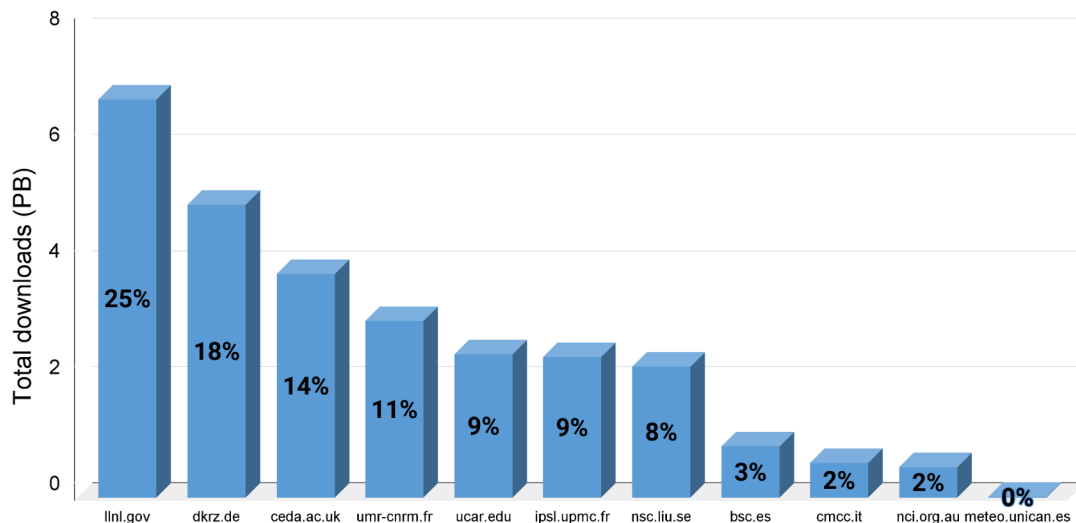
- ~~17.7~~ 21.9 PB CMIP6 data available including ~~10~~ ~12 PB of unique and ~~8~~ ~10 PB of replicated data

- ~~16.2~~ 27.9 PB CMIP6 downloads (to November 2021)

- LLNL ~~27~~ 25% downloads to date
- DKRZ ~~20~~ 18%
- CEDA ~~12~~ 14%
- CNRM ~~15~~ 11%
- UCAR 9%
- IPSL ~~13~~ 9%

~~WGCM-23/December-2020~~ vs  
WGCM-24/December 2021

CMIP6 total downloads by ESGF node

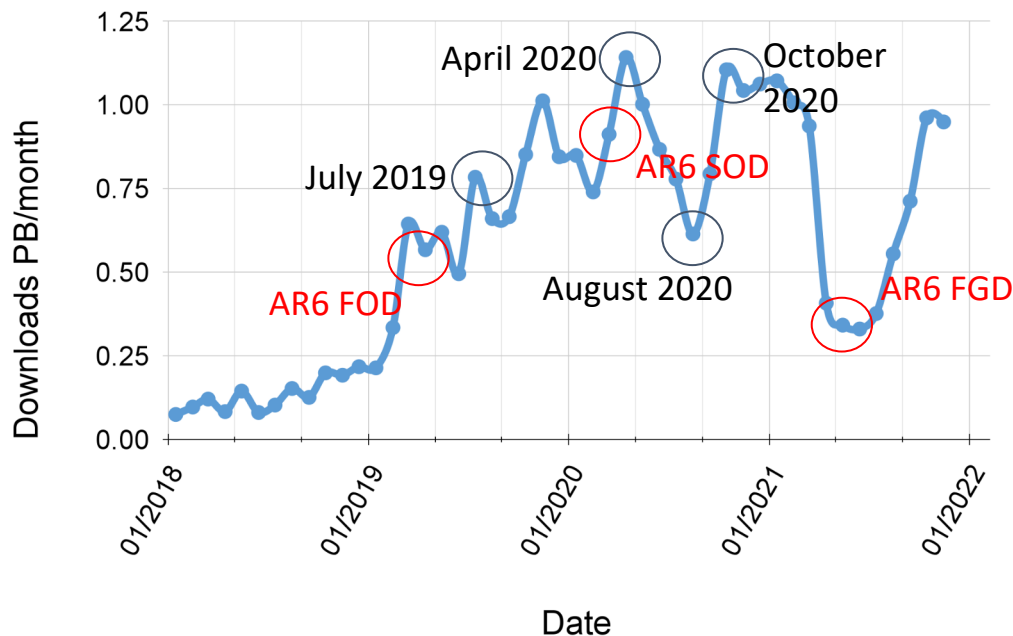


Distinct ESGF node

# Downloaded data

- Over ~28 PB of recorded downloads (to November 2021)
- Use of local (JASMIN/DKRZ/..) or “dark” archives (e.g. Pangeo) means data usage is significantly larger
- Interesting to see COVID/**AR6** activity impacts

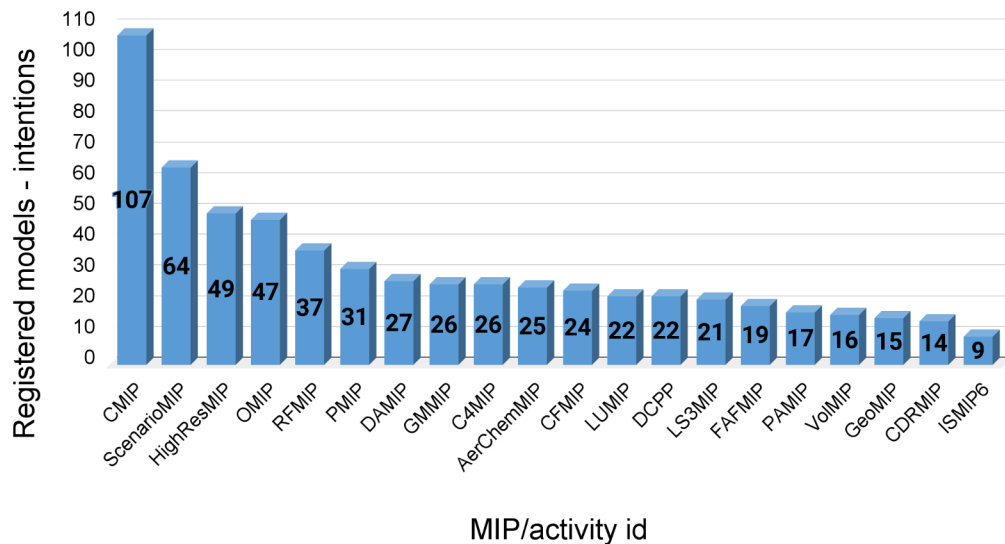
CMIP6 total downloads by month



# CMIP6 controlled vocabulary

- ~~137~~ 140 models registered with CMIP6 CVs
- Each model involved in 6\* activities on average
- Experiments grown from ~280 to 322 including six recent “CovidMIP” experiments added to DAMIP
- Added CDRMIP and PAMIP in March 2018
- Added “COVIDMIP” in November 2020

CMIP6\_CVs registered models - intentions to contribute



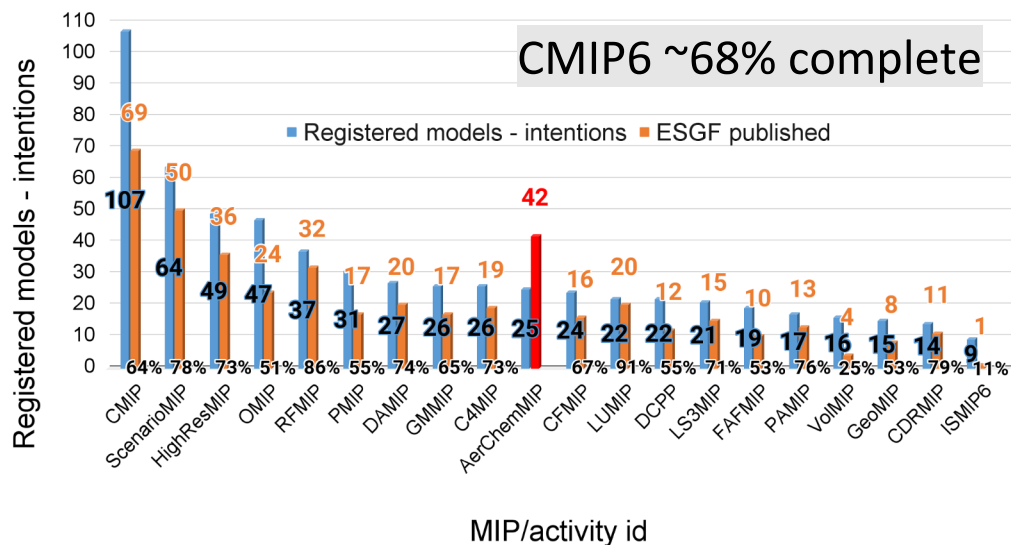
[https://wcrp-cmip.github.io/CMIP6\\_CVs/docs/CMIP6\\_experiment\\_id.html](https://wcrp-cmip.github.io/CMIP6_CVs/docs/CMIP6_experiment_id.html)  
[https://wcrp-cmip.github.io/CMIP6\\_CVs/docs/CMIP6\\_institution\\_id.html](https://wcrp-cmip.github.io/CMIP6_CVs/docs/CMIP6_institution_id.html)  
[https://wcrp-cmip.github.io/CMIP6\\_CVs/docs/CMIP6\\_source\\_id.html](https://wcrp-cmip.github.io/CMIP6_CVs/docs/CMIP6_source_id.html)



# CMIP6 controlled vocabulary

- ~~137~~ 140 models registered with CMIP6 CVs
- Each model involved in 6\* activities on average
- Experiments grown from ~280 to 322 including six recent “CovidMIP” experiments added to DAMIP
- Added CDRMIP and PAMIP in March 2018
- Added “COVIDMIP” in November 2020

CMIP6\_CVs registered models - intentions to contribute



[https://wcrp-cmip.github.io/CMIP6\\_CVs/docs/CMIP6\\_experiment\\_id.html](https://wcrp-cmip.github.io/CMIP6_CVs/docs/CMIP6_experiment_id.html)  
[https://wcrp-cmip.github.io/CMIP6\\_CVs/docs/CMIP6\\_institution\\_id.html](https://wcrp-cmip.github.io/CMIP6_CVs/docs/CMIP6_institution_id.html)  
[https://wcrp-cmip.github.io/CMIP6\\_CVs/docs/CMIP6\\_source\\_id.html](https://wcrp-cmip.github.io/CMIP6_CVs/docs/CMIP6_source_id.html)



Paul J. Durack  
[durack1@llnl.gov](mailto:durack1@llnl.gov)

Matthew Mizielski  
[matthew.mizielski@metoffice.gov.uk](mailto:matthew.mizielski@metoffice.gov.uk)

Work completed by the PCMDI project  
is funded by the U.S. Department of  
Energy, Office of Science, Office of  
Biological and Environmental Research,  
Regional and Global Model Analysis  
Program



**Disclaimer**

This document was prepared as an account of work sponsored by an agency of the United States government. Neither the United States government nor Lawrence Livermore National Security, LLC, nor any of their employees makes any warranty, expressed or implied, or assumes any legal liability or responsibility for the accuracy, completeness, or usefulness of any information, apparatus, product, or process disclosed, or represents that its use would not infringe privately owned rights. Reference herein to any specific commercial product, process, or service by trade name, trademark, manufacturer, or otherwise does not necessarily constitute or imply its endorsement, recommendation, or favoring by the United States government or Lawrence Livermore National Security, LLC. The views and opinions of authors expressed herein do not necessarily state or reflect those of the United States government or Lawrence Livermore National Security, LLC, and shall not be used for advertising or product endorsement purposes.