

WORLD CLIMATE RESEARCH PROGRAMME

*Michel Rixen
WGCM20 meeting
1-2 Nov 2016
Princeton, USA*



ICSU
International Council for Science

WCRP's mission....

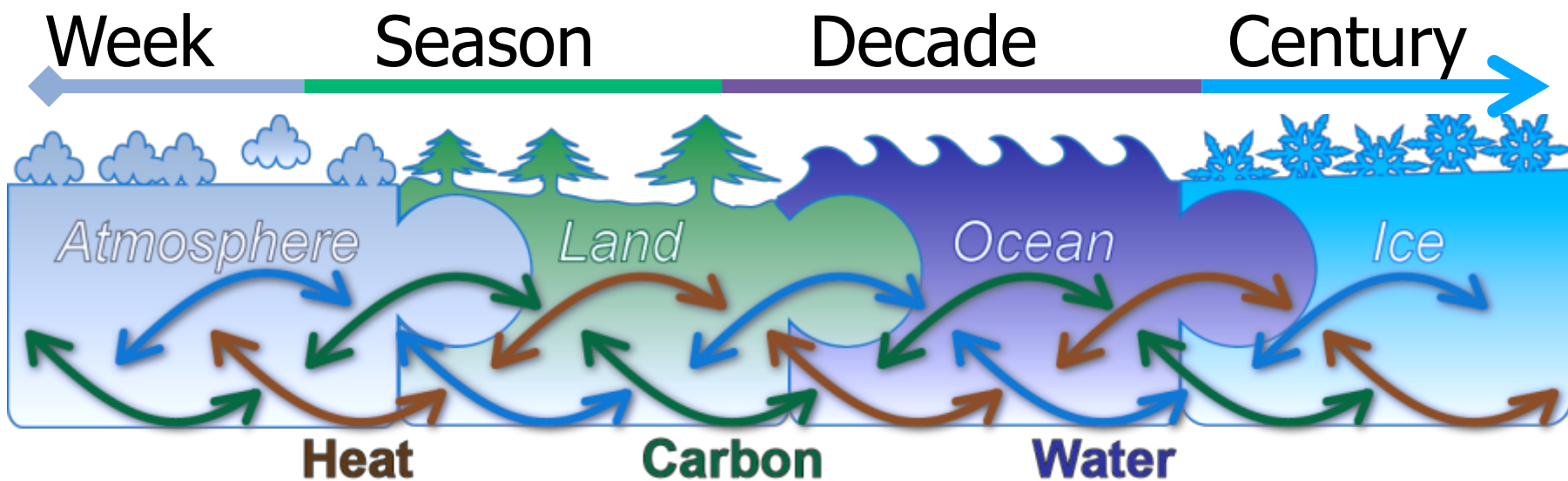
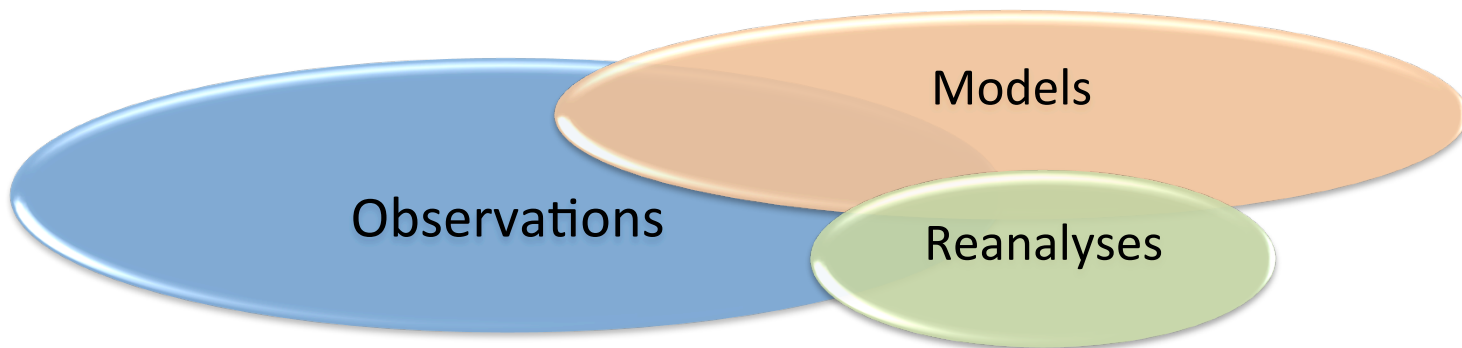
... is to facilitate analysis and prediction of Earth system variability and change for use in an increasing range of practical applications of direct relevance, benefit and value to society.

The two overarching objectives of WCRP are:

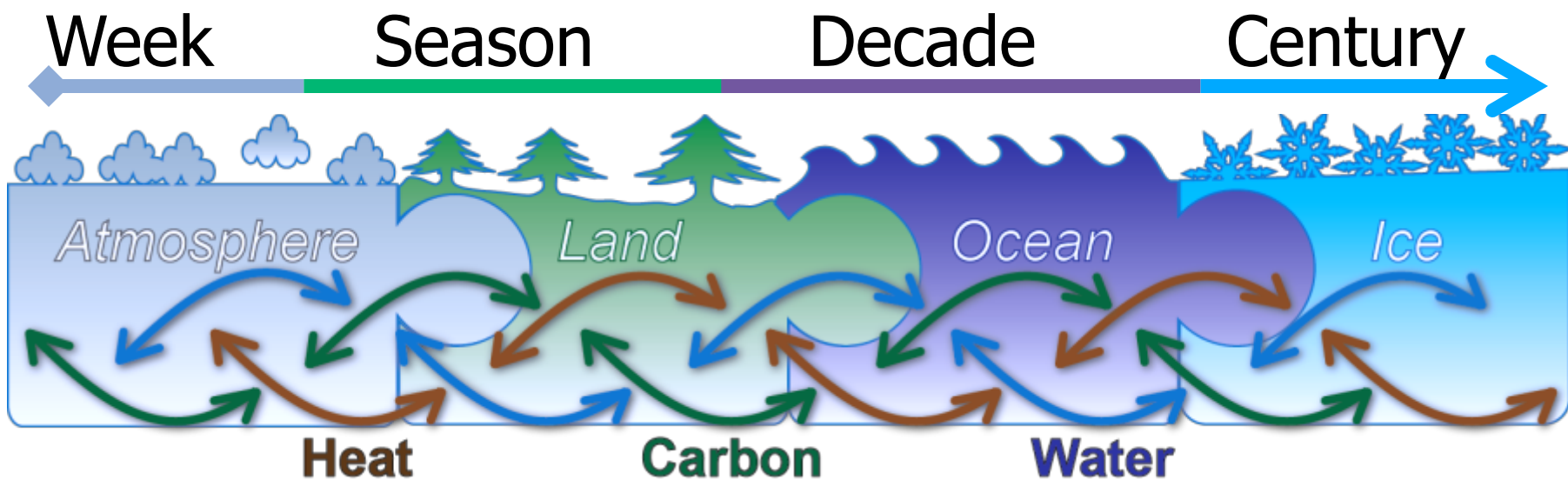
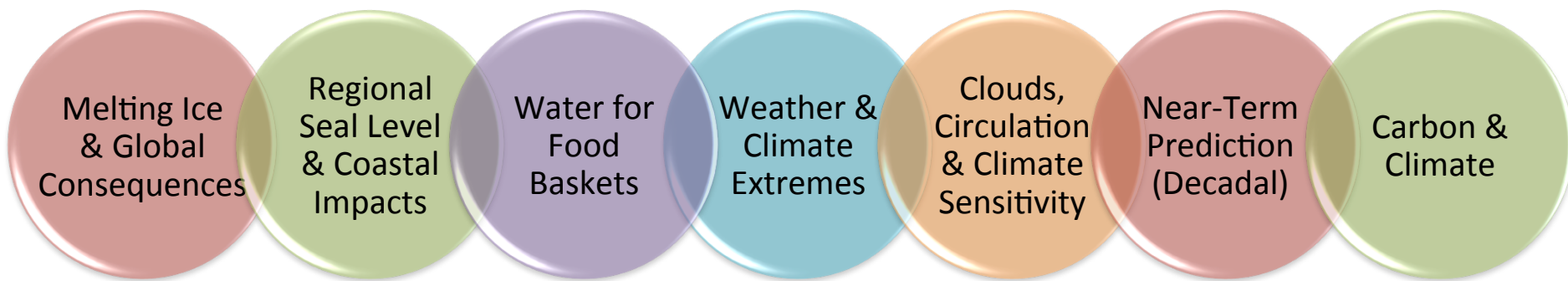
to determine the predictability of climate

to determine the effect of human activities on climate

Role of WCRP



Role of WCRP



WCRP Structure

Joint Scientific Committee

Joint Planning Staff

Modeling Advisory Council

Data Advisory Council

Working Groups on: Numerical Experimentation (WGNE), Seasonal to Interannual Prediction (WGSIP), Coupled Modeling (WGCM), Regional Climate (WGRC)

CLIC

CLIVAR

GEWEX

SPARC

CORDEX

Melting Ice & Global Consequences

Regional Sea Level & Coastal Impacts

Water for Food Baskets

Weather & Climate Extremes

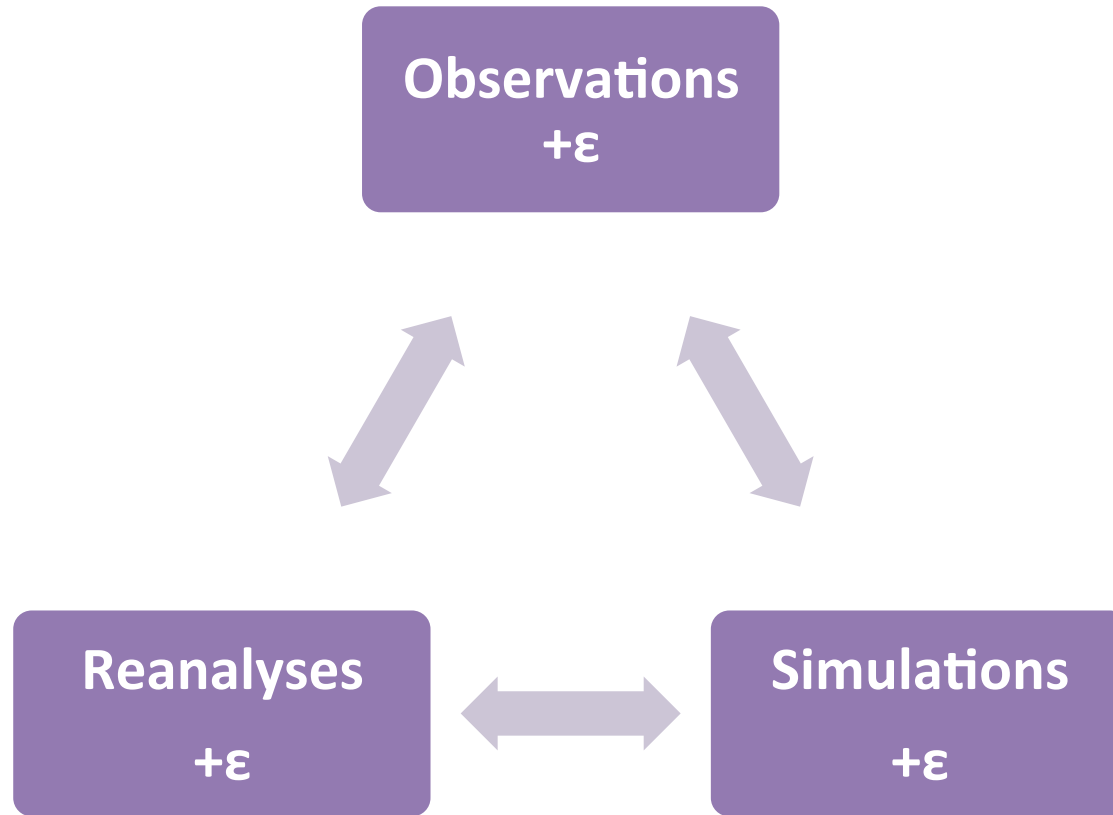
Clouds, Circulation & Climate Sensitivity

Near-Term Prediction (Decadal)

Carbon & Climate



WCRP vision for a data infrastructure: Earth System Grid Federation



- **IN THE PAST**
 - nominations submitted via ICSU and national POCs
- **NOW**
 - WCRP has gained Observer Status within IPCC
 - Nominations can be forwarded by WCRP to IPCC directly

WCRP Ahead document

- Review and strategic document currently under development
- CMIP and GC Cloud will be featured
- Opportunity to convey achievements and fresh vision of WGCM
- Draft due 4 Dec 2016

Some relevant events

- USA elections 8 November 2016...
- WDAC6, 22-23 March 2017, ESRIN/ESA, Italy
- JSC38, 3-5 April 2017, Paris, France
- WGNE Systematic Error Workshop, 19-23 June 2017, Montreal, Canada
- WCRP Earth System Model Evaluation workshop, 31 July – 4 Aug 2017, Aspen, USA
- Joint WGs meeting, 9-13 Oct 2017, Exeter, UK
- International Conference on Reanalysis, 9-13 Nov 2017, Rome, Italy
- ...

Last but not least

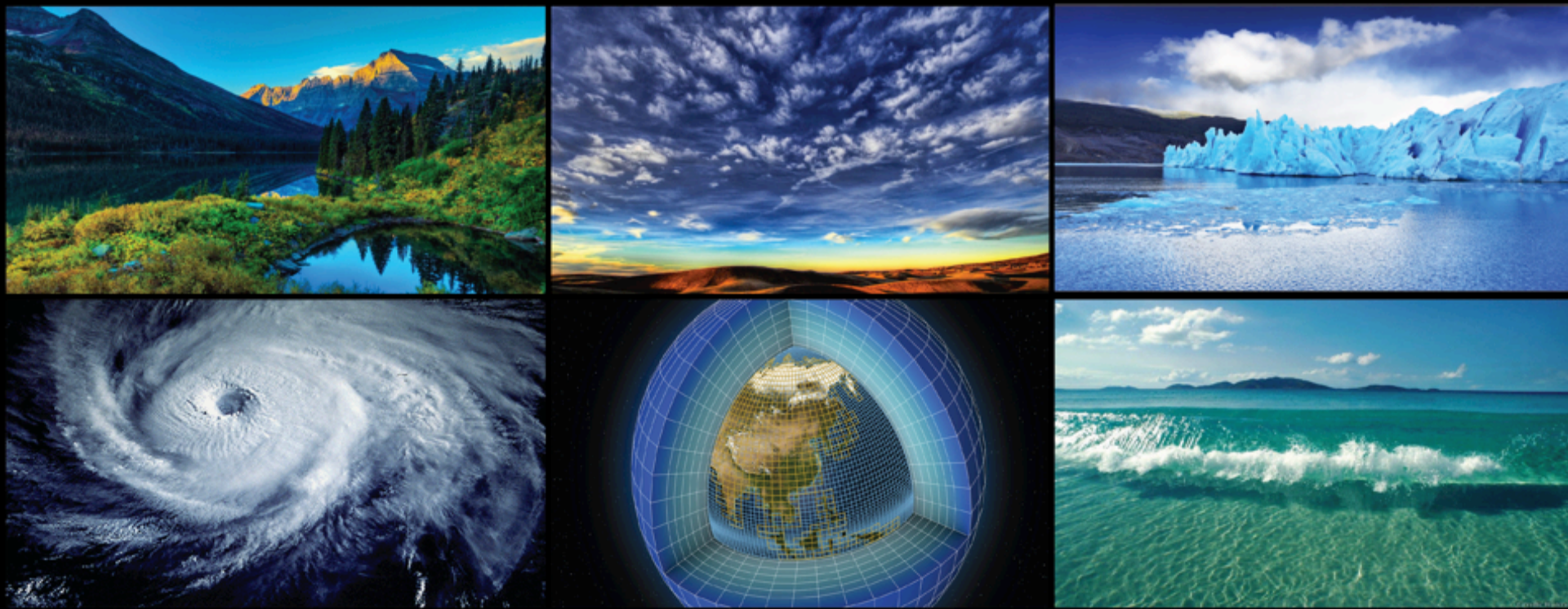
Many thanks to GFDL/Princeton for hosting us and to Balaji, Anna and Catherine for all their help!

Special thanks to Sandrine!

Welcome back Greg!



ICSU
International Council for Science



WORLD CLIMATE RESEARCH PROGRAMME

Thank you for your attention!

