

# Coupled Model Intercomparison Project (CMIP6): Summary Feedback from Model Groups and MIPs

Veronika Eyring, Jerry Meehl, Bjorn Stevens, Ron Stouffer, Karl Taylor  
(CMIP Panel)

Sandrine Bony and Cath Senior (WGCM Co-chairs)

17 October 2014

Please see the CMIP Panel website for additional information and updates:

<http://www.wcrp-climate.org/index.php/wgcm-cmip/about-cmip>

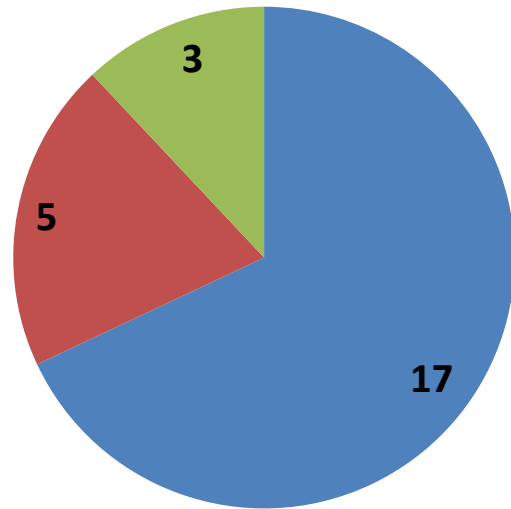
**Contact for questions:** CMIP Panel Chair Veronika Eyring (email: [Veronika.Eyring@dlr.de](mailto:Veronika.Eyring@dlr.de))

The final CMIP6 Design will be published in a CMIP6 Special Issue together with a description of the CMIP6-Endorsed MIPs and the forcing datasets. This Special Issue will open ~April 2015.

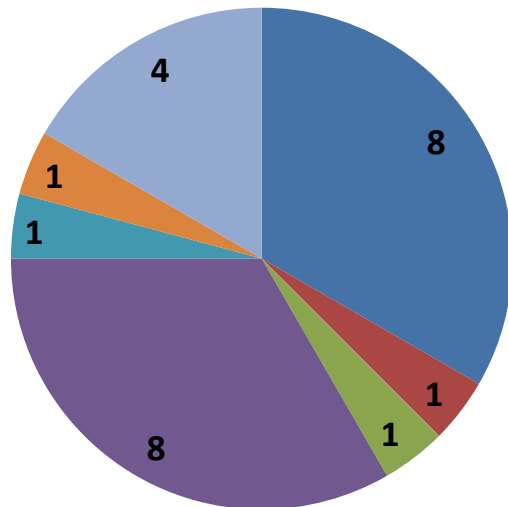


# Contribution of MIPs to CMIP6 Science Questions and GCs

- Does the MIP cover at least one of the science questions? -

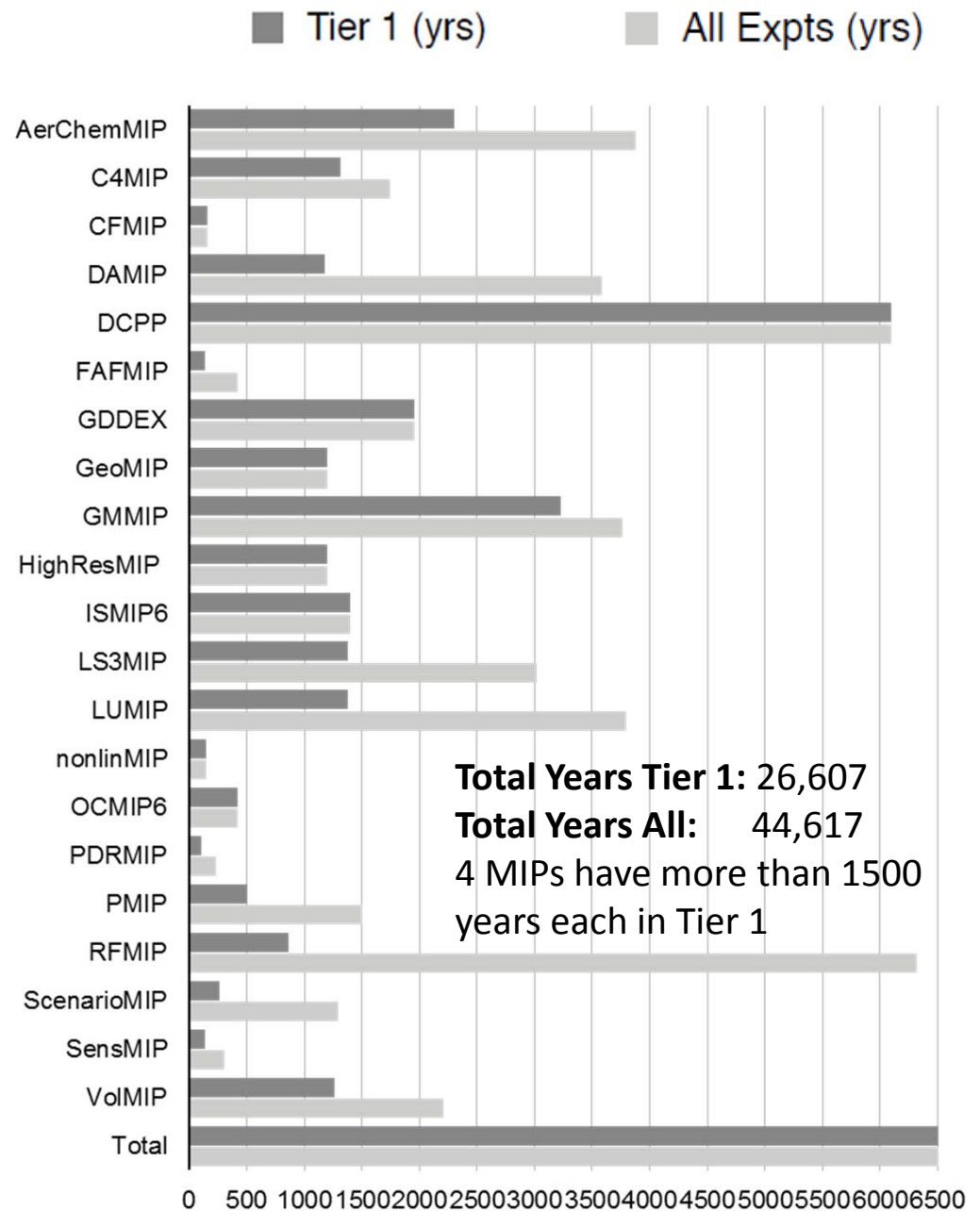
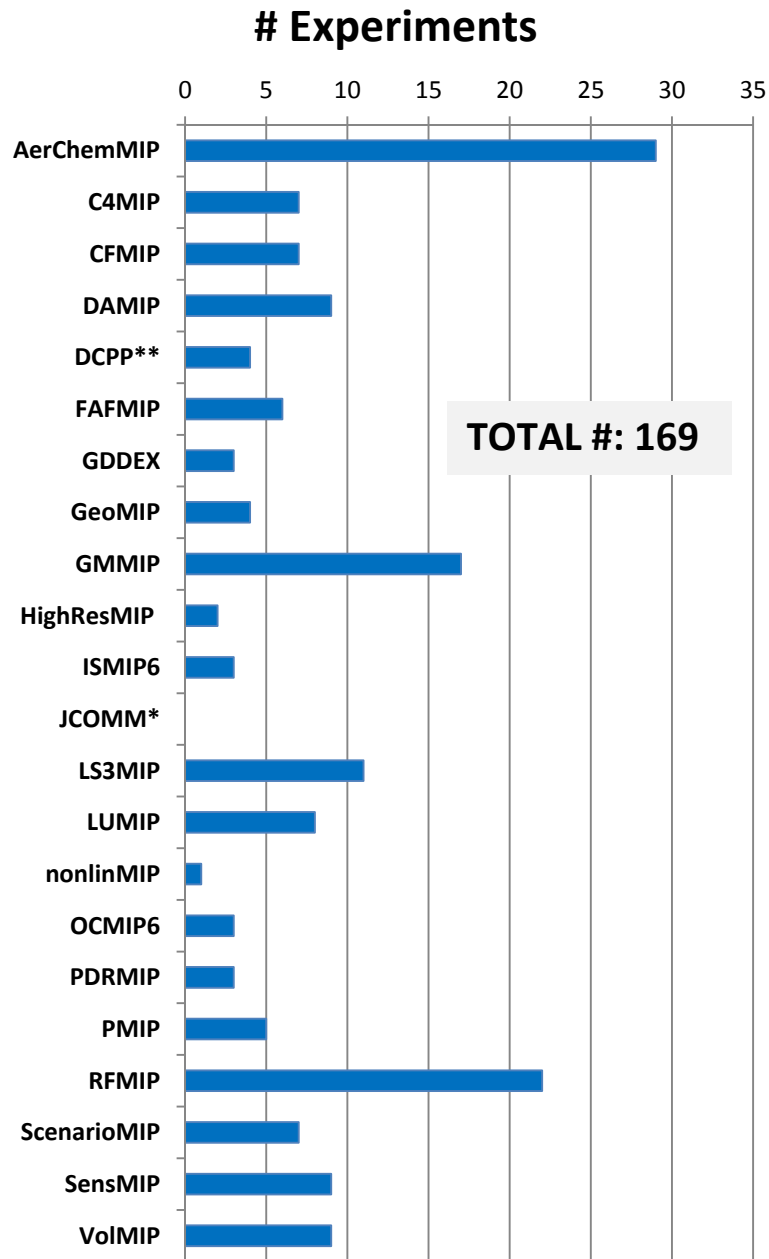


- Forcings and Feedbacks
- Systematic Biases
- Predictability



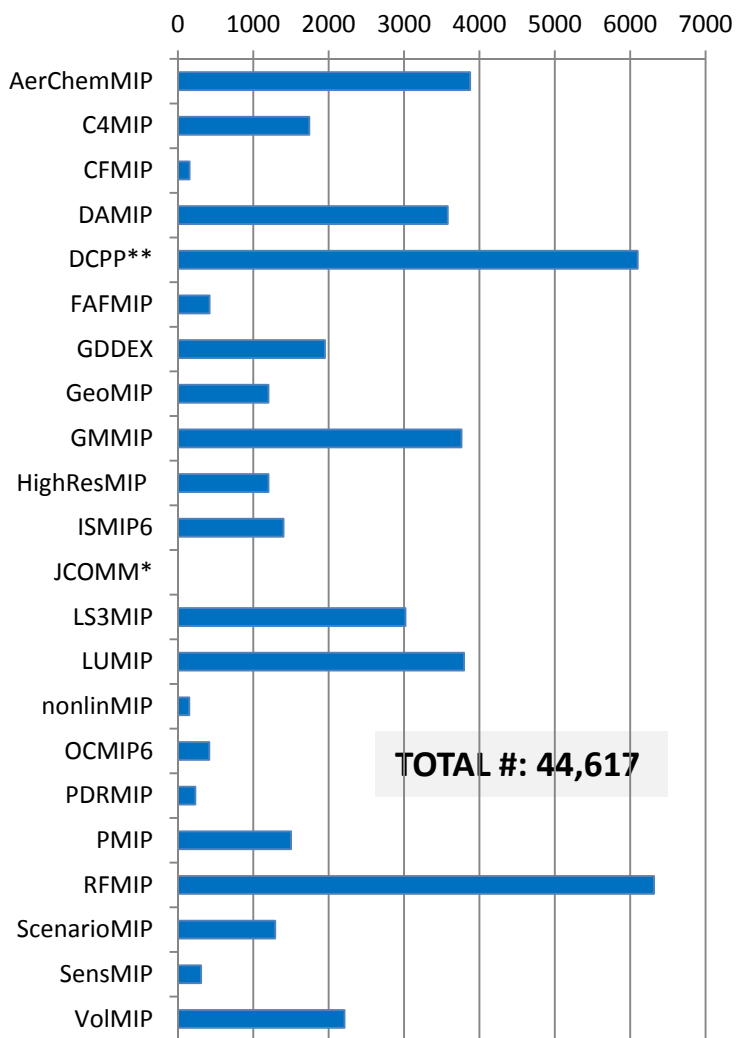
- Clouds, Circulation and Climate Sensitivity
- Changes in Cryosphere
- Climate Extremes
- Regional Climate Information
- Regional Sea-level Rise
- Water Availability
- Biospheric forcings and feedbacks

# Summary of MIP Applications

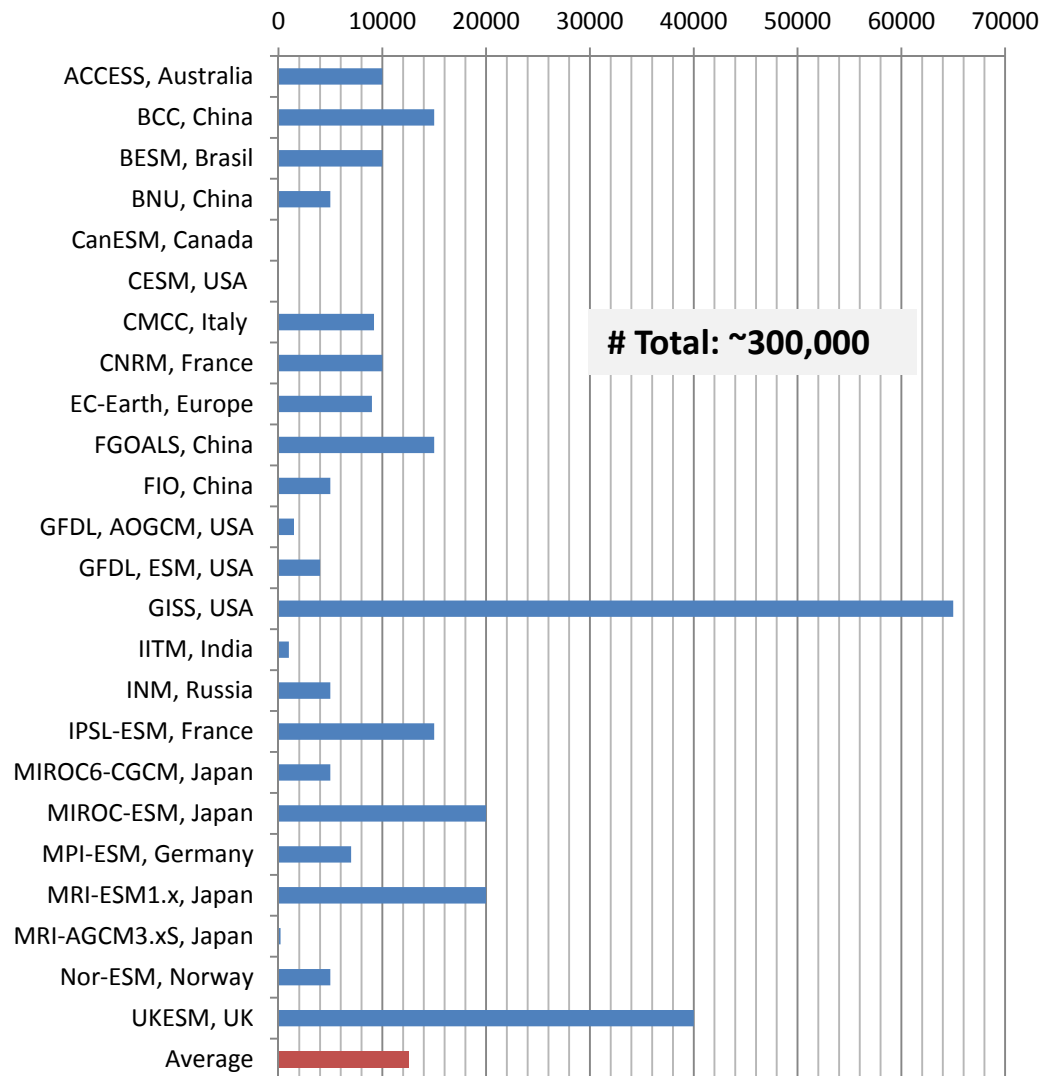


# Comparison MIP Applications – 1<sup>st</sup> Estimate Model Groups

## # Model Years Total



## # Preliminary Estimate of Total # Years



=> Harmonization and further prioritization in Tiers required

# CMIP6 MIP Endorsement Process

- A sufficient number of modeling groups have agreed to participate in the MIP –  
**Initial Preliminary Interest Model Groups**

