

# Do externally forced North Atlantic circulation trends resemble modes of internal variability?

Sara Bennie<sup>1</sup>, Amanda C. Maycock<sup>1</sup>, Doug M. Smith<sup>2</sup>

1. School of Earth and Environment, University of Leeds, UK
2. Met Office Hadley Centre, UK

# Motivation



UNIVERSITY OF LEEDS

Projections of the DJF NAO index for [2080-2099] – [1995-2014]

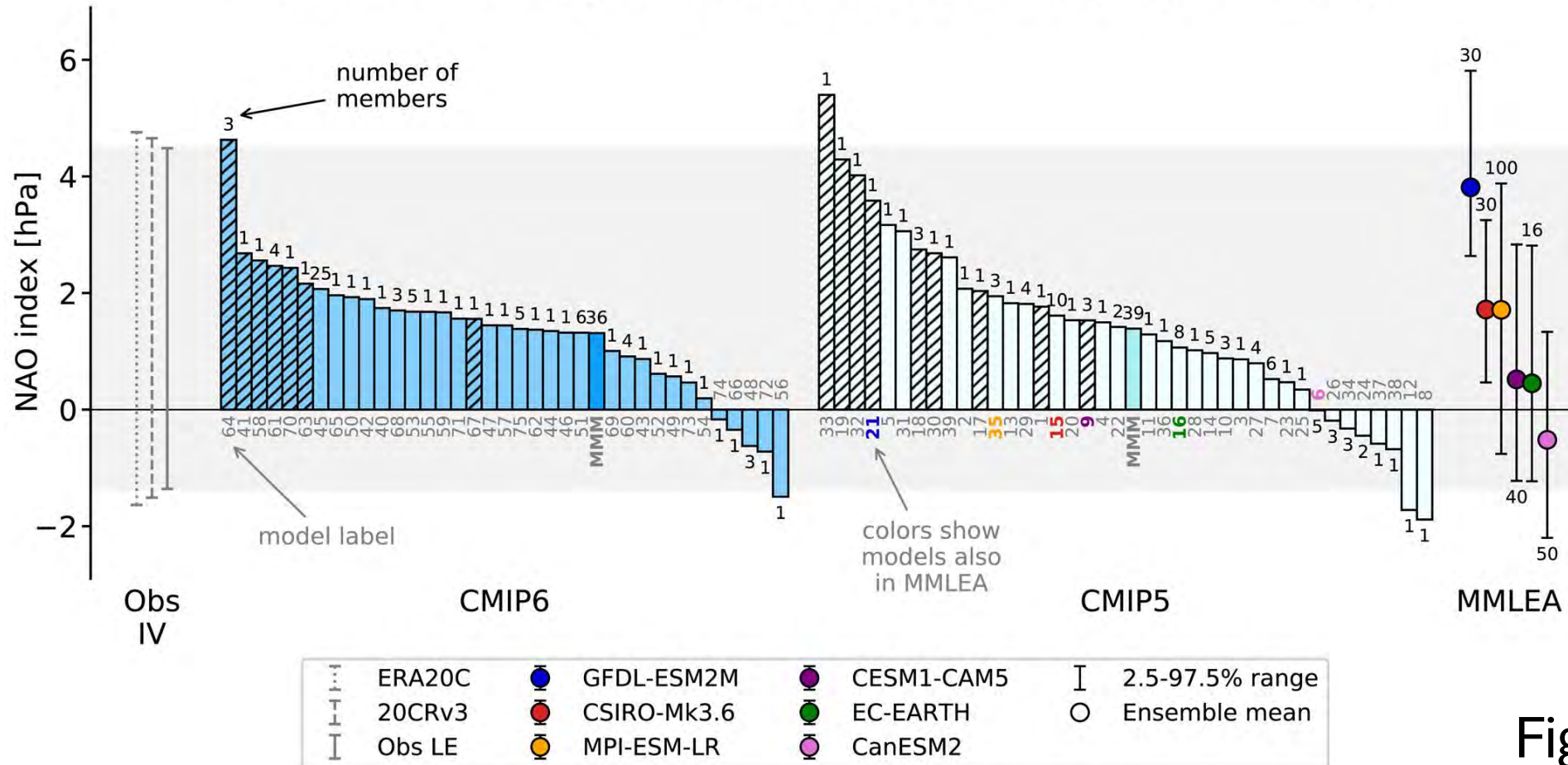


Fig 1, McKenna & Maycock (2021).

# Motivation



UNIVERSITY OF LEEDS

## Detecting forced differences in the DJF NAO index

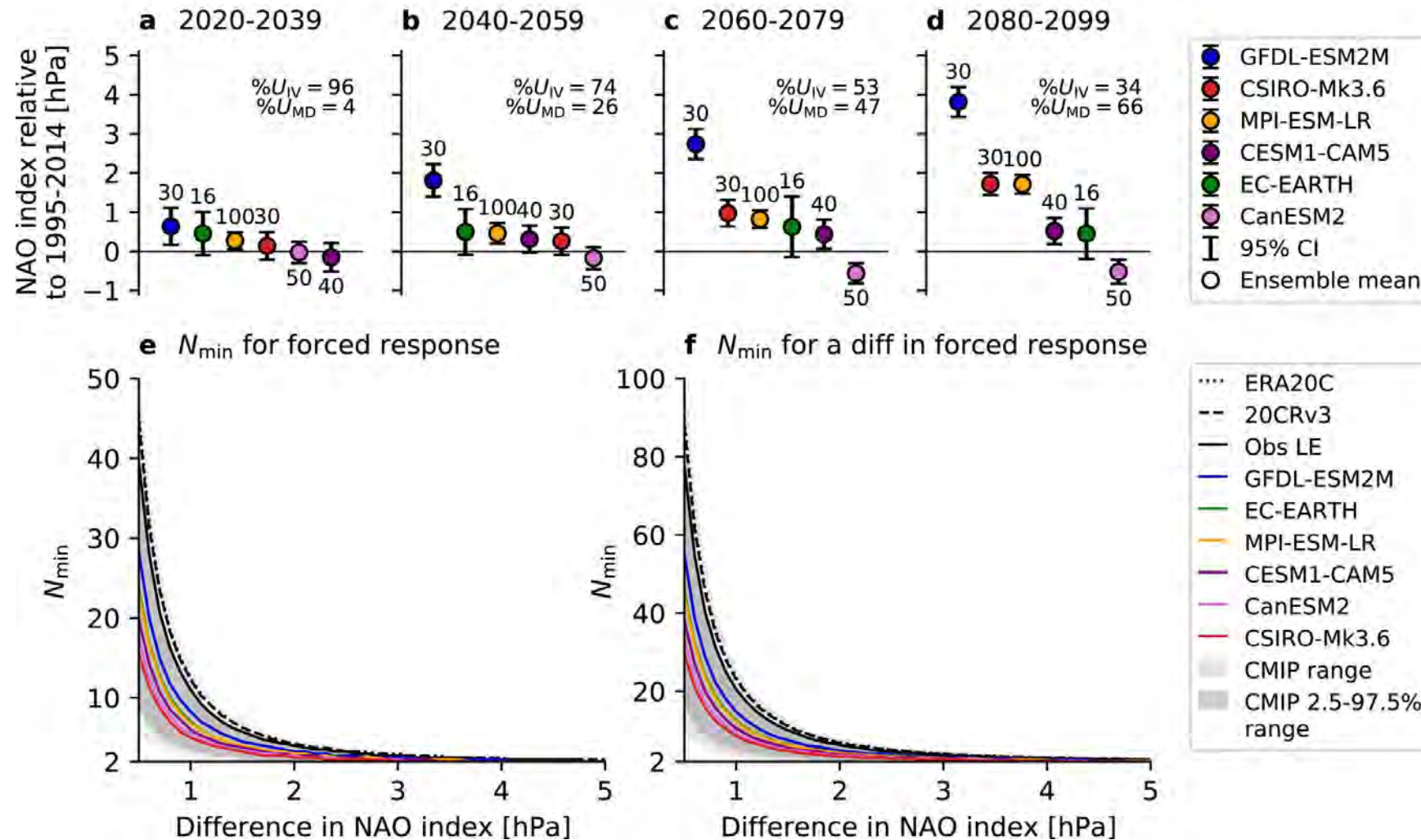


Fig 3, McKenna & Maycock (2021).

- Blackport & Fyfe 2022: positive trend in the NAO index (1951-2020) in **tails of model distribution**.
- Smith et al. 2025: multidecadal NAO variability **forced** by natural forcings (volcanic) and models **underestimate** the amplitude.
- Circulation trends are important for regional climate – **unclear** how much the forced responses **resemble** modes of internal variability.



Do externally forced North Atlantic circulation trends resemble modes of internal variability?

1. Take the ensemble mean and find the **forced response** (linear trend) across all the experiments (1850-2014).
2. Find **spatial patterns** for the internal modes of variability in the historical experiment by regressing pressure anomalies onto the leading EOFs (EOF1 - NAO and EOF2 – East Atlantic pattern).
3. **Project** the forced response onto the historical regression patterns and quantify the residuals.

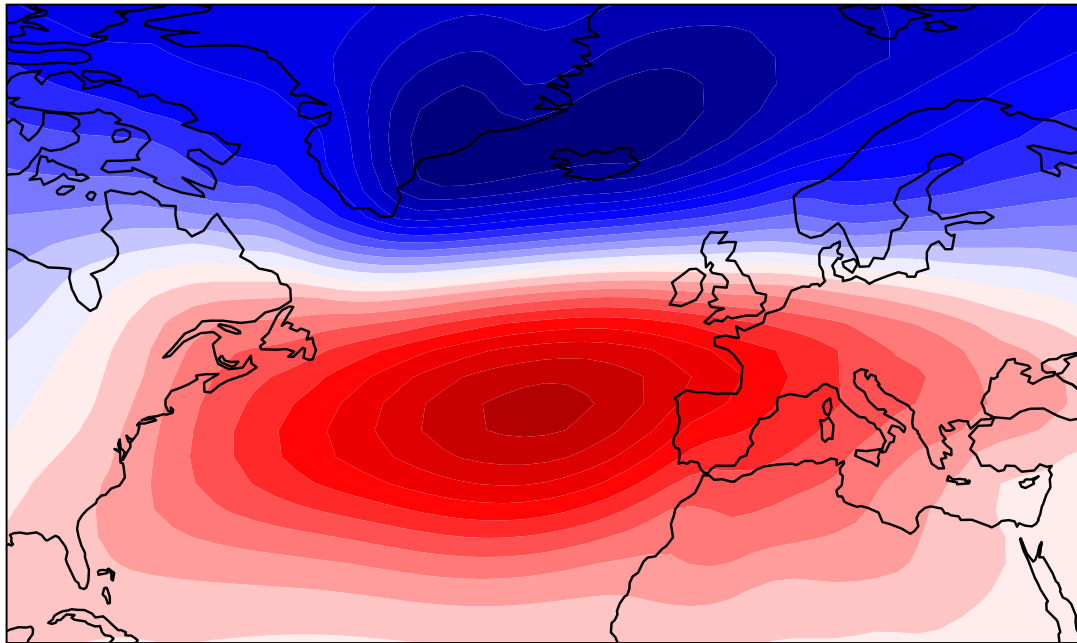
# Spatial patterns of modes



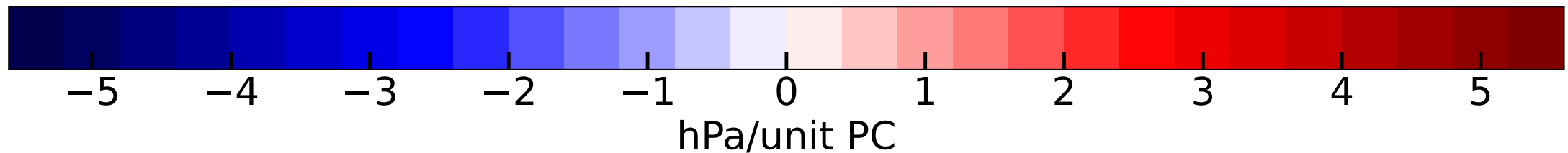
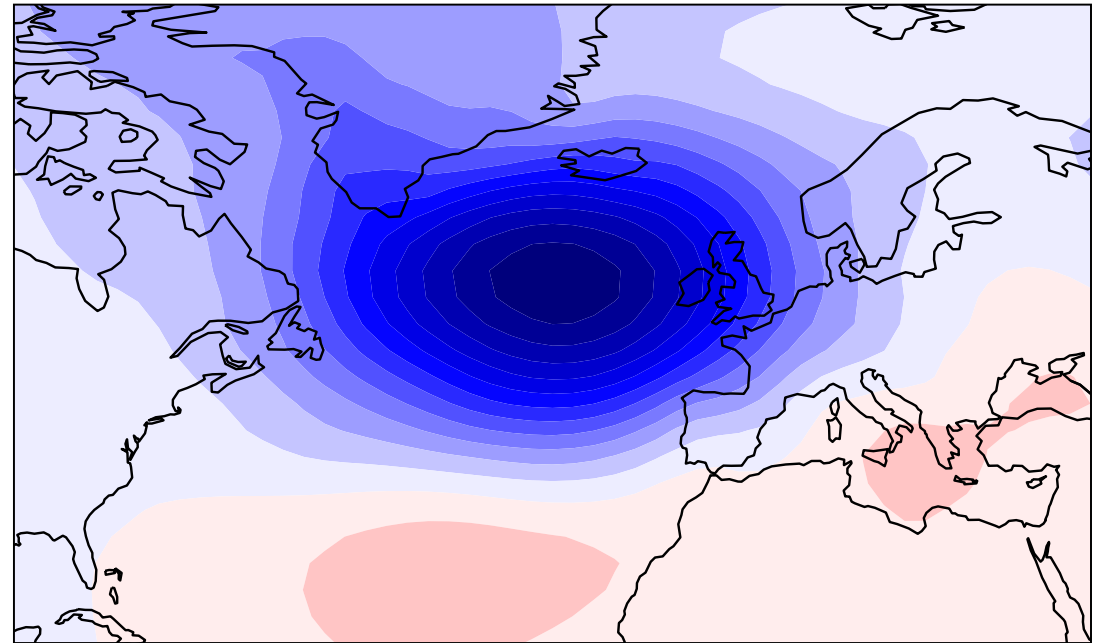
UNIVERSITY OF LEEDS

HadGEM3-GC31-LL's historical regression pattern (1850-2014)

North Atlantic Oscillation



East Atlantic Pattern



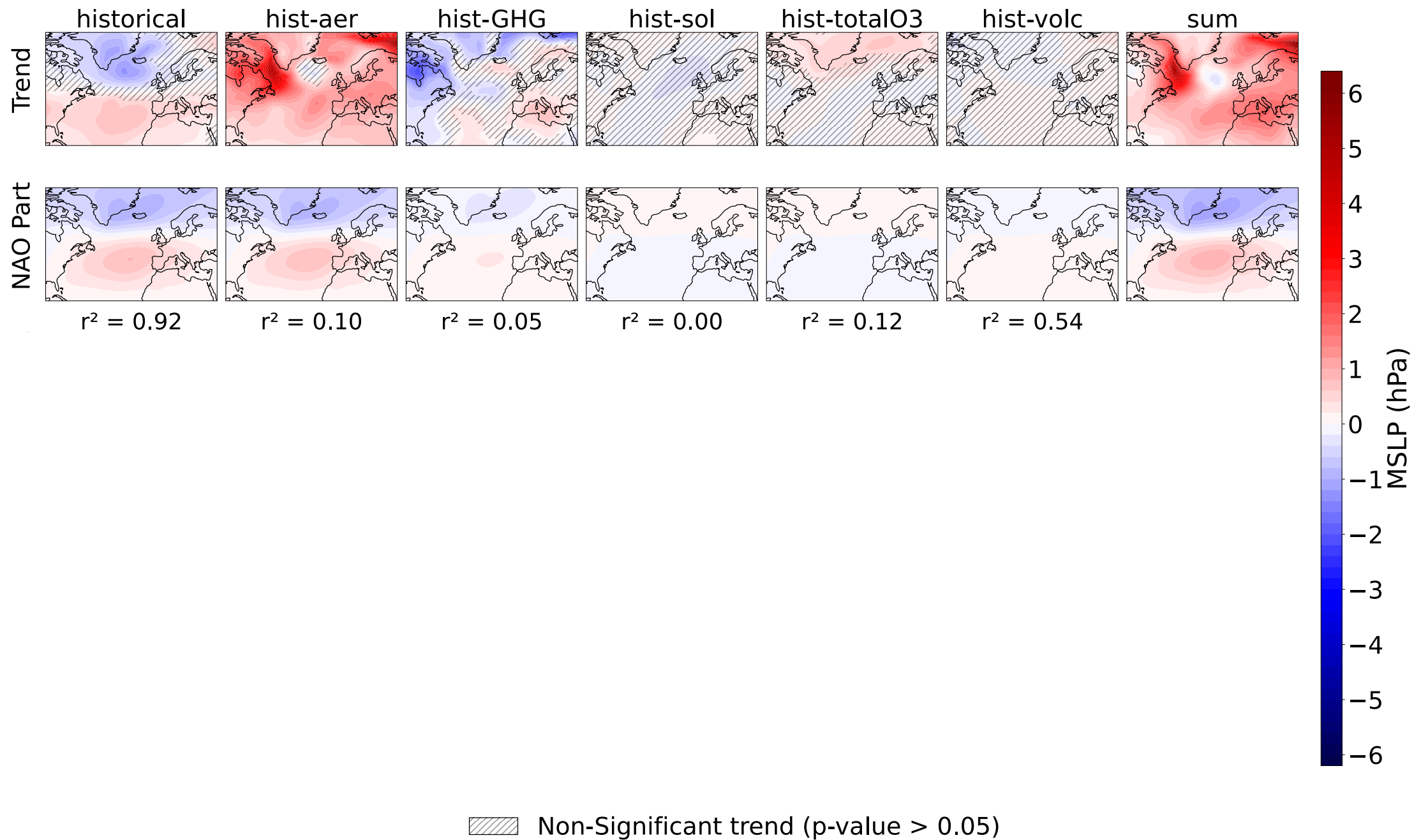


# Forced response projections onto NAO and EA patterns - HadGEM3-GC31-LL 1850-2014

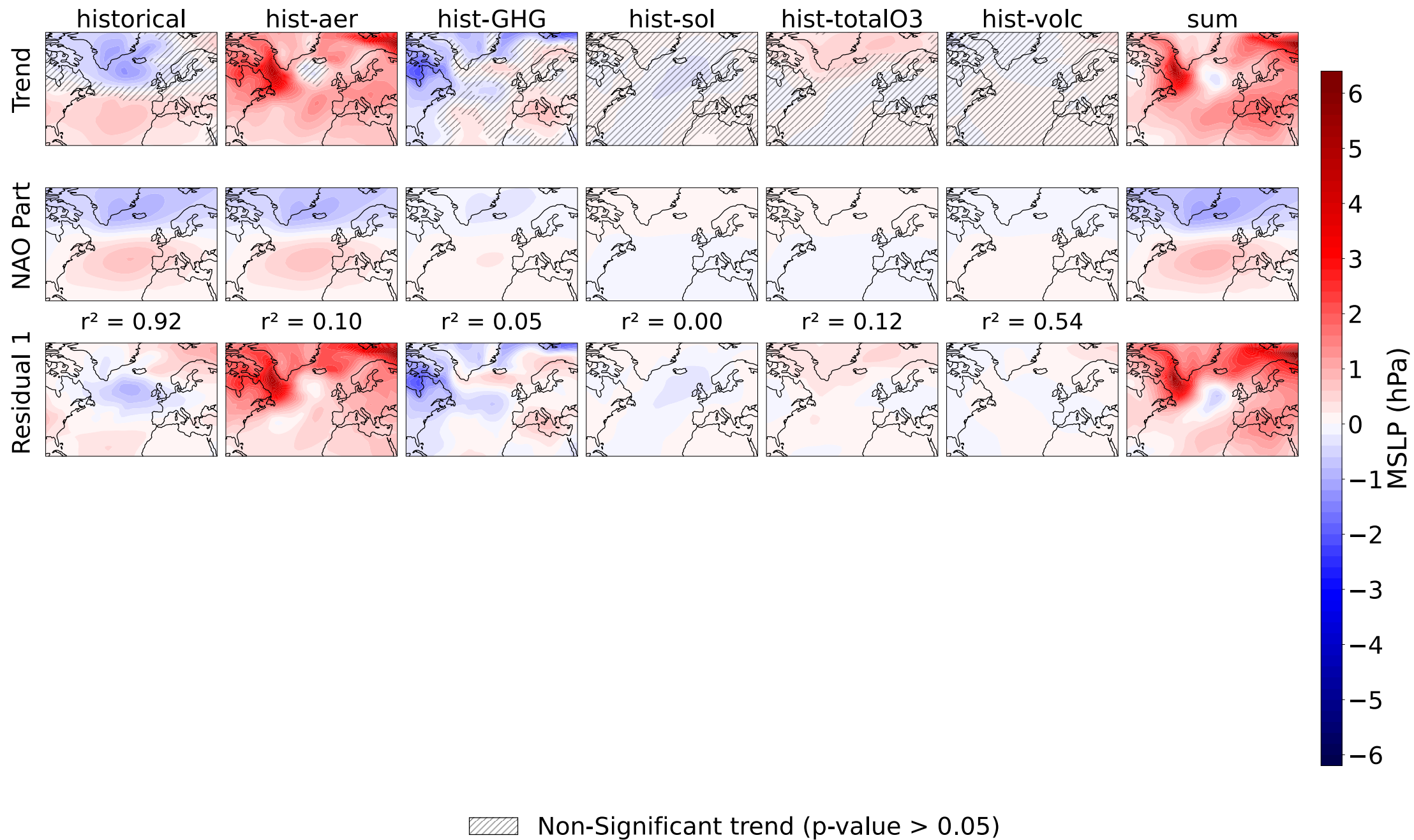




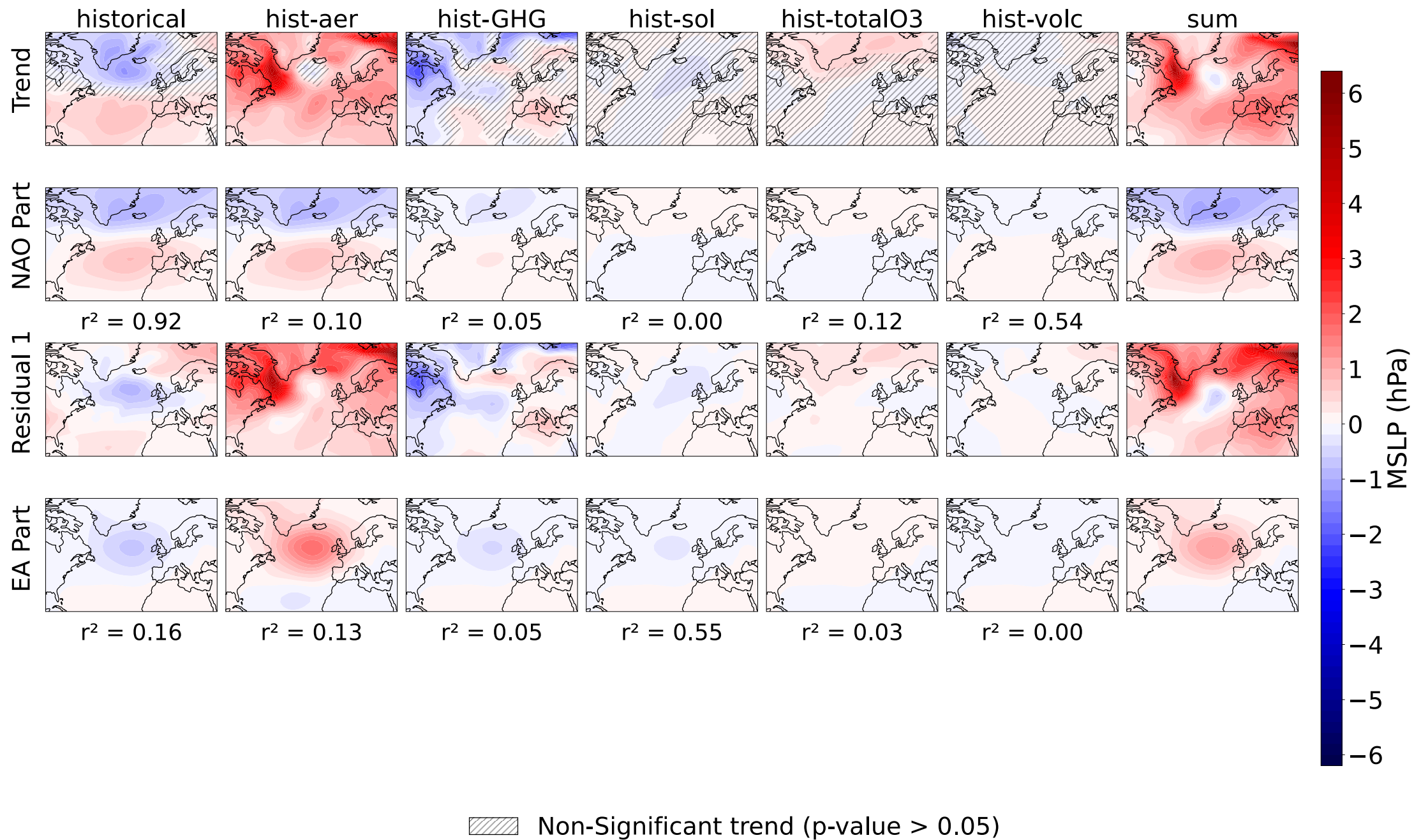
# Forced response projections onto NAO and EA patterns - HadGEM3-GC31-LL 1850-2014



# Forced response projections onto NAO and EA patterns - HadGEM3-GC31-LL 1850-2014

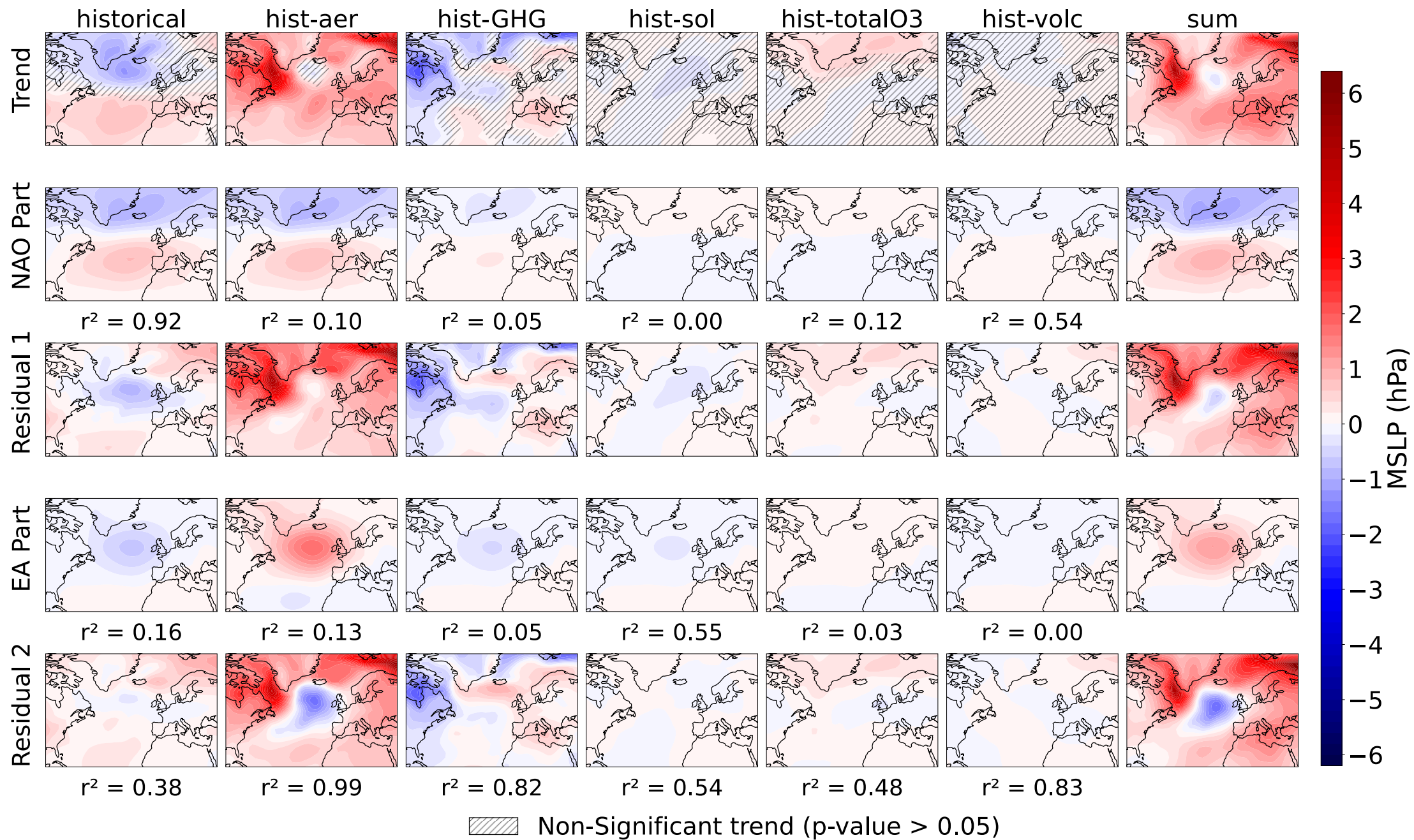


# Forced response projections onto NAO and EA patterns - HadGEM3-GC31-LL 1850-2014

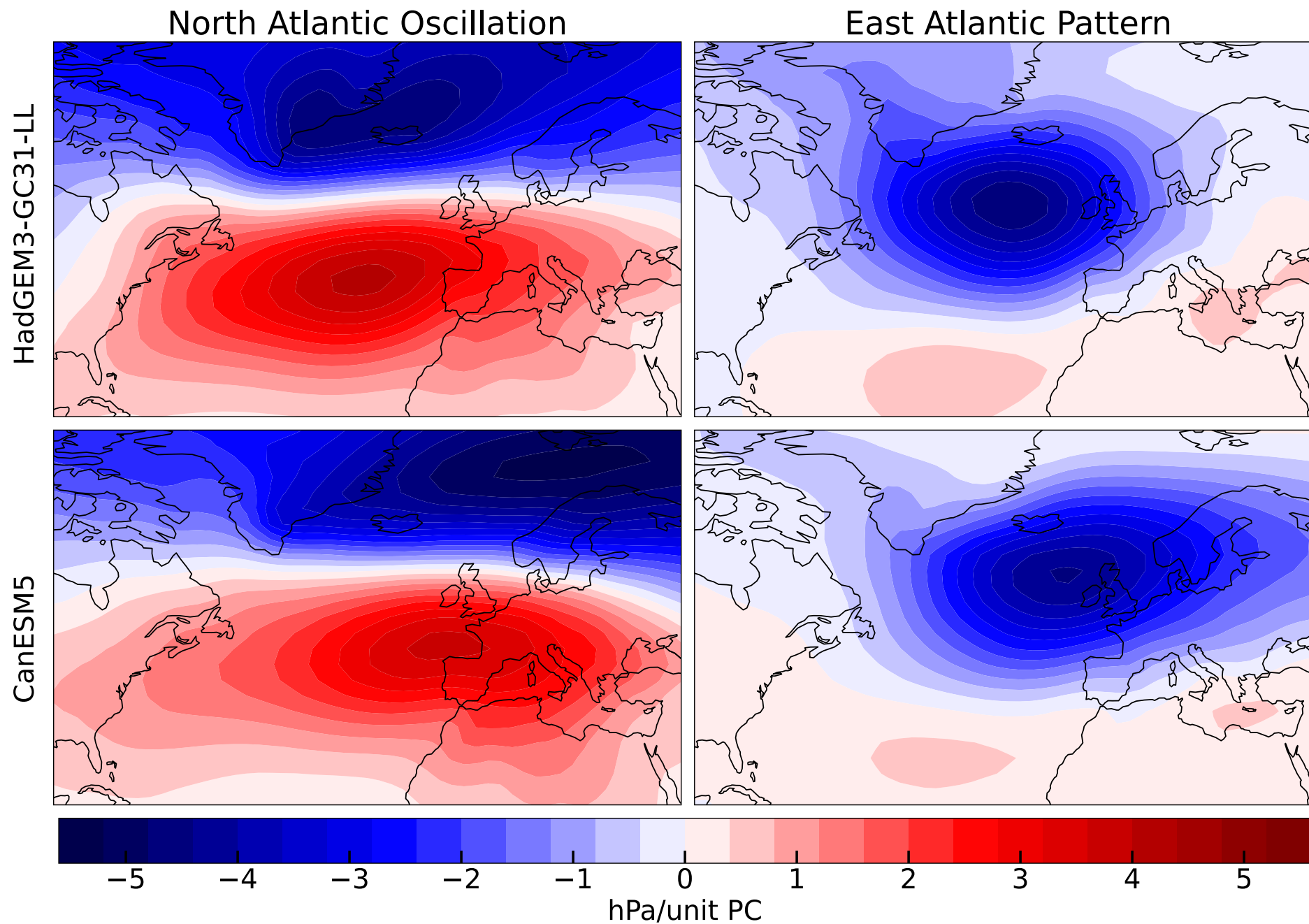




# Forced response projections onto NAO and EA patterns - HadGEM3-GC31-LL 1850-2014

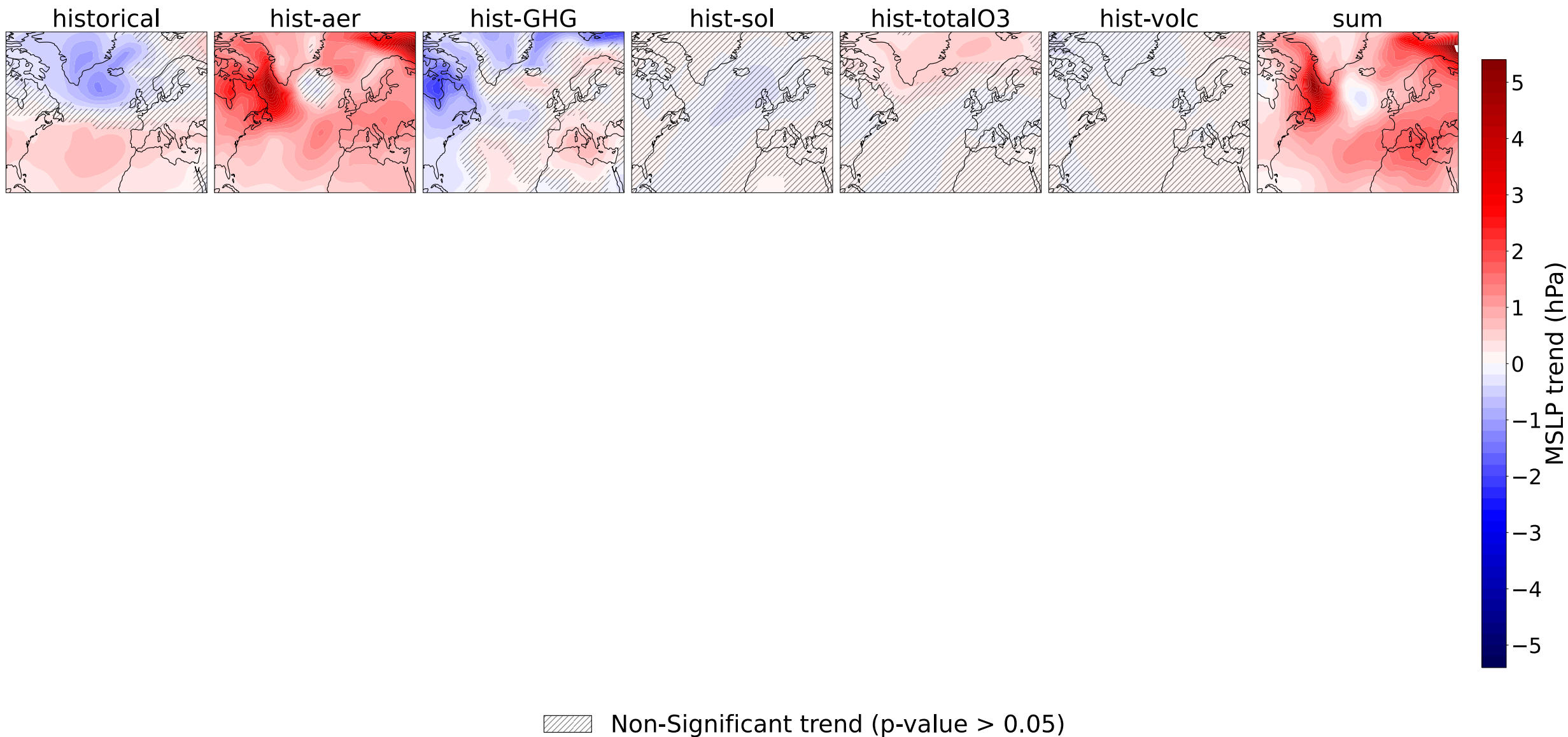


# Regression patterns for the historical experiment (1850-2014)

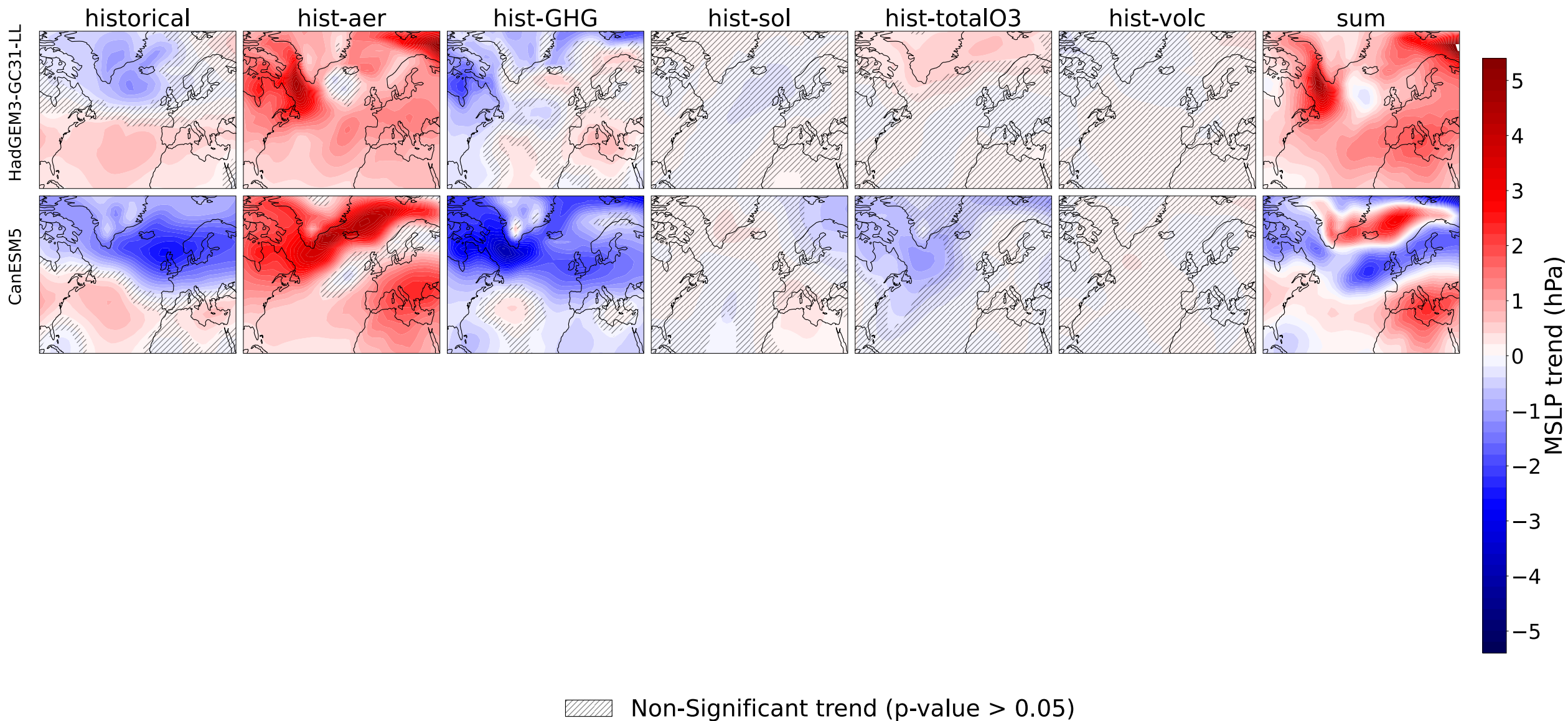


# Forced response 1850-2014

HadGEM3-GC31-LL

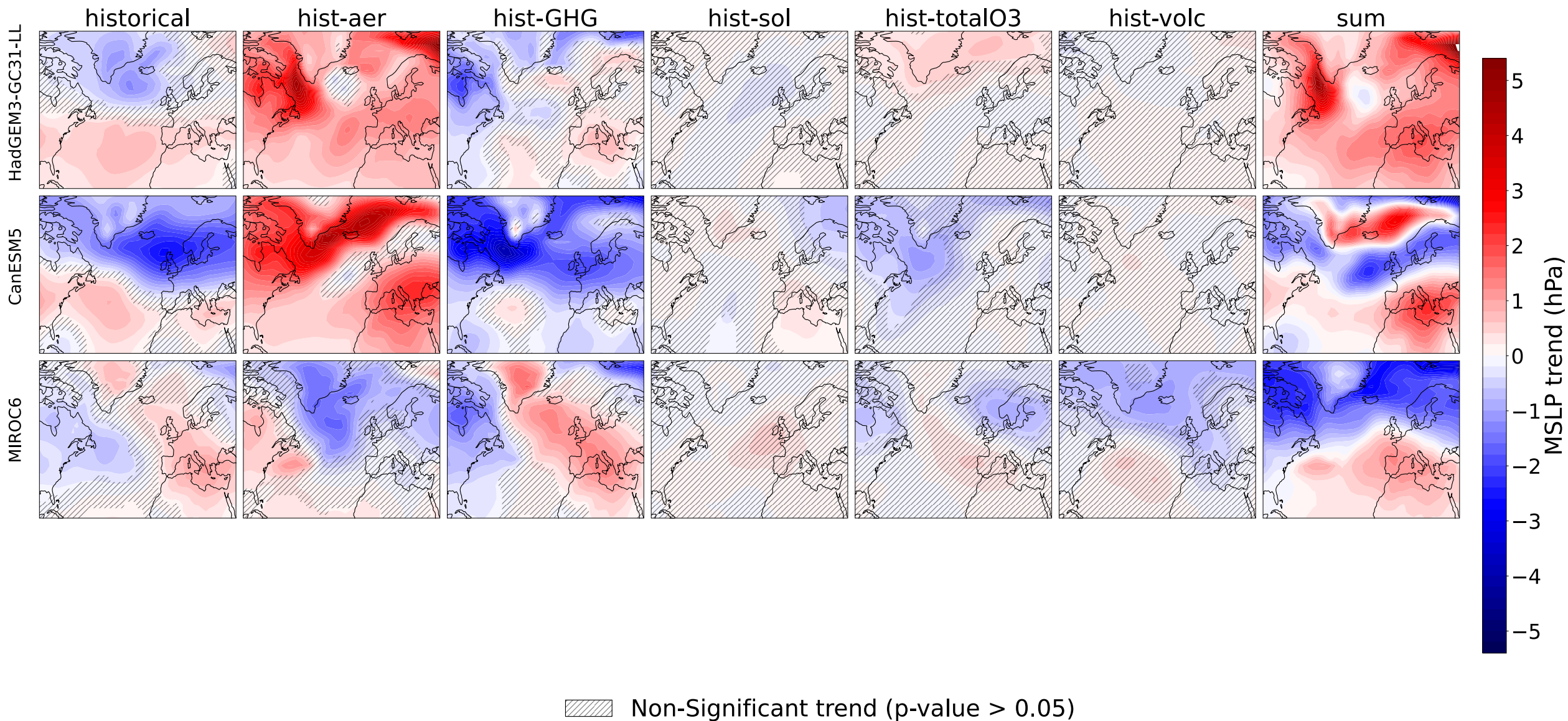


# Forced response 1850-2014

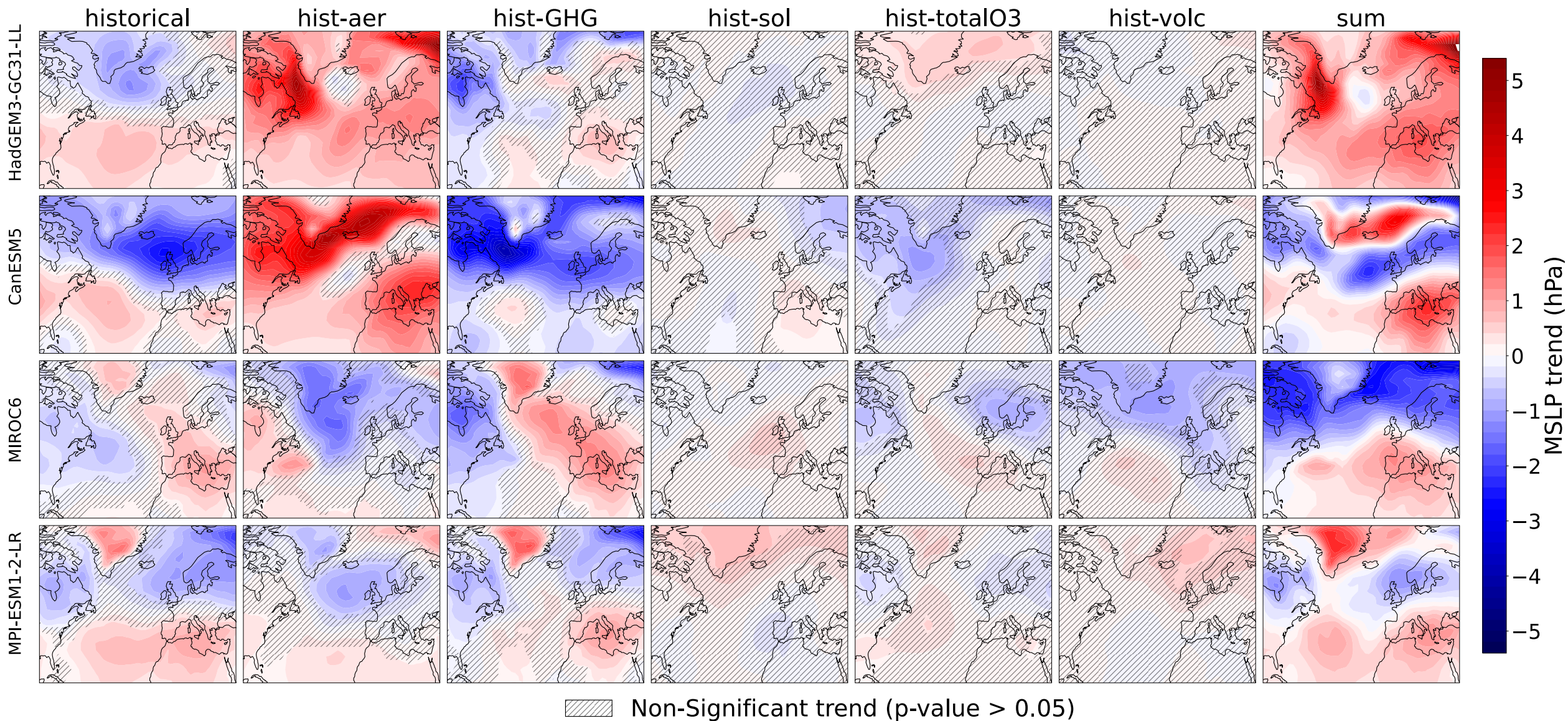




# Forced response 1850-2014



# Forced response 1850-2014

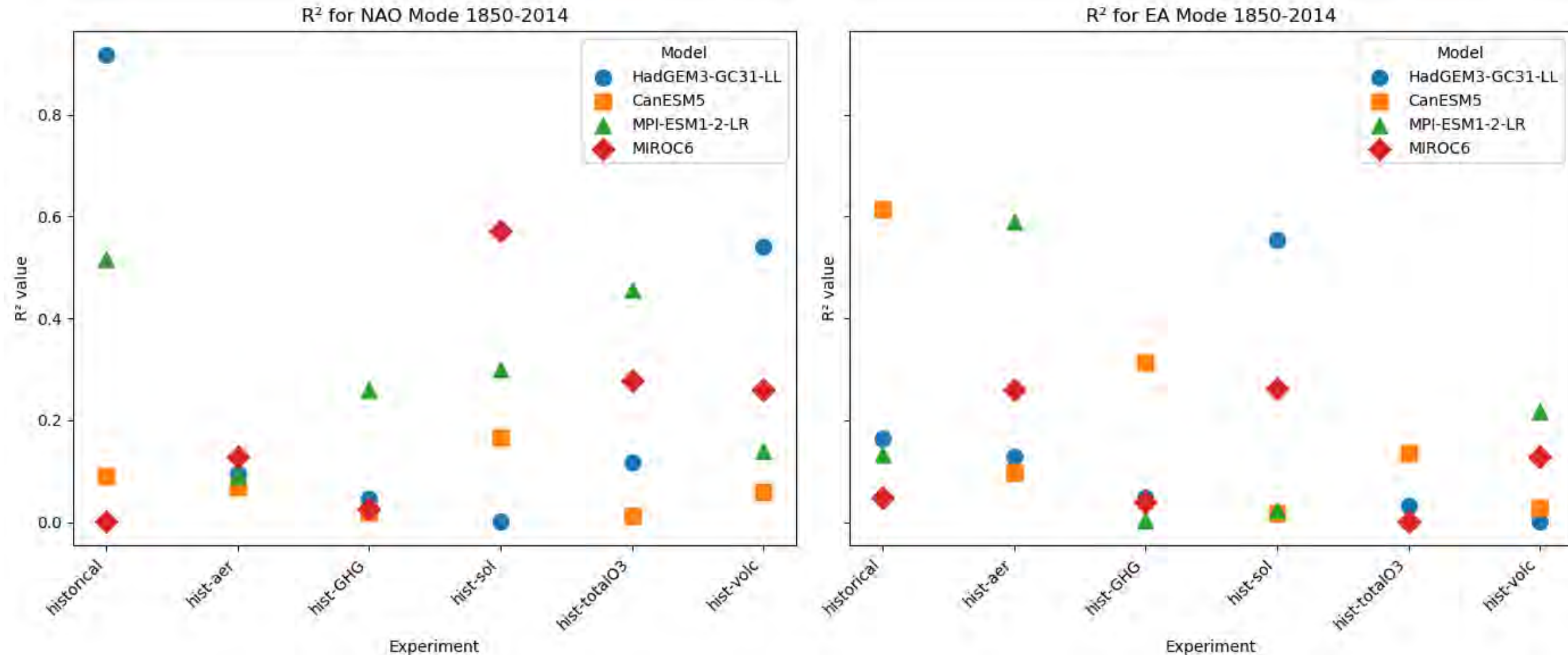




# Summary of projections across models



UNIVERSITY OF LEEDS



- Expand to other:
  - Models.
  - Seasons.
  - Modes of variability in different regions.
- Investigate the **differences** between the models.