



Ted Shepherd  
Regina R Rodrigues

# World Climate Research Programme

My Climate Risk: Inverting  
the construction of climate  
information

1<sup>st</sup> Forum – RFP South America



INTERNATIONAL  
COUNCIL  
FOR SCIENCE



# WCRP New Structure



INTERNATIONAL  
COUNCIL  
FOR SCIENCE



## My Climate Risk



### Lighthouse Activities

- Major experiments, high-visibility projects, or infrastructure building blocks
- Activities that truly integrate the capabilities (scientific, technical, infrastructure) across WCRP and with partners.

### My Climate Risk

- To develop a new framework for assessing and explaining regional climate risk to deliver climate information that is meaningful at the local scale.

# Our ambition



INTERNATIONAL  
COUNCIL  
FOR SCIENCE



## My Climate Risk



### Vision

The new science that is envisaged within MCR is not around models, or observations, or process understanding, but on how they are all used together within a context of deep uncertainty.



### Goal

To develop and mainstream a 'bottom-up' approach to regional climate risk, which starts from the decision context (and the decision scale) and enables relevant climate information to be brought into that context.



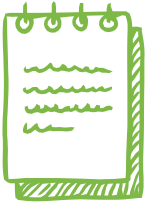
### Purpose

By developing a new framework for assessing and explaining the physically plausible climate drivers of regional climate risk, climate information will be made meaningful at the local scale.

# Our ambition



## My Climate Risk



### Science Plan

- ✓ The overall goal of *My Climate Risk* is to develop **new paradigms** for regional climate risk assessment studies, e.g., through distilling generic vs. context-specific aspects.
- ✓ The key to this is process understanding of the variability/change of regional climate and climate extremes on targeted timescales, within a **particular local context**.
- ✓ *My Climate Risk* will largely draw on existing stakeholder engagement studies that have already generated knowledge on stakeholder needs, **working closely with locally grounded partners**.
- ✓ A canonical activity would be to discuss current risk in a given situation, with proximate explanations, and then develop **storylines of future climate-related risk** based on those explanations. In this way, the past can be related to the future within a risk framing.

# Vision



INTERNATIONAL  
COUNCIL  
FOR SCIENCE



## My Climate Risk



### Structure – Labs

A non-hierarchical ecosystem of labs/communities of practice; like a *mycorrhizal network*, sharing resources rather than competing for them, and anchored by 'mother trees' in the form of *regional hubs*



Concept of Wood Wide Web by Suzanne Simard

# Vision



INTERNATIONAL  
COUNCIL  
FOR SCIENCE



## My Climate Risk

VINTAGE SCHUMACHER



### Small is Beautiful

A Study of Economics  
as if People Mattered



### Structure – Labs

From E.F. Schumacher's concept of "Intermediate Technologies" (a chapter in *Small is Beautiful*, 1973), production methods should be:

- ✓ used in workplaces located where people live now (rather than forcing them to migrate)
- ✓ cheap
- ✓ relatively simple
- ✓ using local materials and mainly for local use

In our case, we are producing *information*, so can draw on the worldwide storehouse of information through the entire **WCRP**

# Challenges



INTERNATIONAL  
COUNCIL  
FOR SCIENCE



## My Climate Risk

### Lack of Continuity



The project cycle mode of operation and the competitive nature of the science funding model

### Stakeholder Exhaustion



Repeated engagement from researchers which serves only the researchers

### Documenting Outcomes



Challenges in documenting outcomes and in publishing transdisciplinary work

### Equity and Legitimacy



“...inequitable North–South partnerships [are] borne out of a paradigm of knowledge deficit and capacity development that runs the risk of entrenching existing inequalities....Creating frameworks that enable the establishment of equitable partnerships requires a shift in perspectives on, and processes related to, the design, implementation and evaluation of success.” Vincent et al. (*Nature Climate Change*, 2020).

# Next Steps



INTERNATIONAL  
COUNCIL  
FOR SCIENCE



World Climate Research Programme

## My Climate Risk



### Network of regional hubs



Grow network of *regional hubs* based on and driven by existing institutions who share values with MCR

The *regional hubs* should support and connect local labs and would be represented on the MCR science team, providing the connection to the rest of the WCRP

Connections to the *regional hubs* would be nurtured through a variety of mechanisms, including training, to develop trust and build long-term, equitable partnerships

# Next Steps



INTERNATIONAL  
COUNCIL  
FOR SCIENCE



## My Climate Risk

### Terms of Reference



Defining code of practice,  
partners' roles,  
responsibilities, benefits...

### Partnerships



Welcoming partners that  
share MCR values

### Science Team



Defining membership  
with WCRP and non  
WCRP members that  
are willing to engage  
and help move things  
forward, with a good  
regional  
representation



# Discussion



INTERNATIONAL  
COUNCIL  
FOR SCIENCE



World Climate Research Programme

## My Climate Risk

### South America

We need *your engagement* to work with us as partners (Hubs) sharing the same principles

### MCR

Ensuring the *involvement of end users* and their local needs from the start of the process, i.e., a bottom-up approach to deliver science in usable decision ready format

### Questions?

- What are the knowledge gaps in SA?
- How can we deliver the information that is needed?
- Are there examples of bottom-up practices?



Thanks!

# World Climate Research Programme

My Climate Risk: Inverting  
the construction of climate  
information

1<sup>st</sup> Forum – RFP South America



INTERNATIONAL  
COUNCIL  
FOR SCIENCE

