

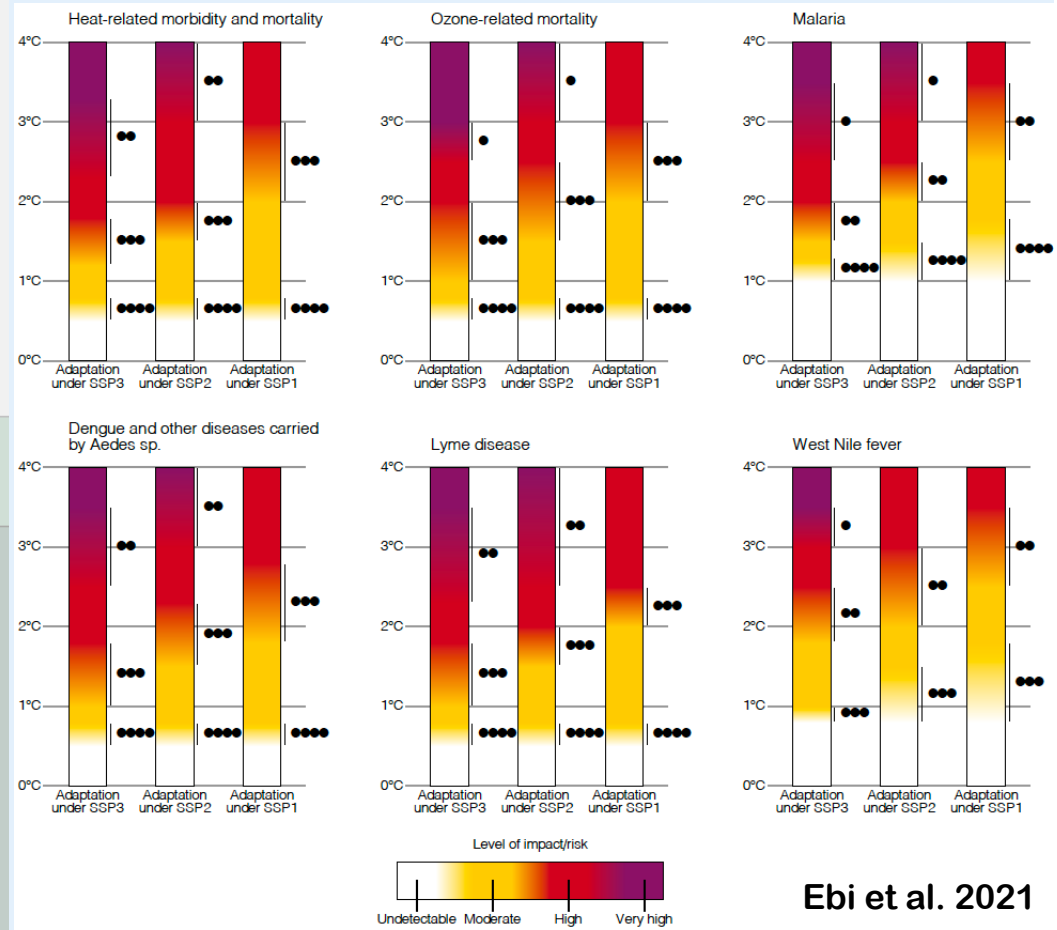
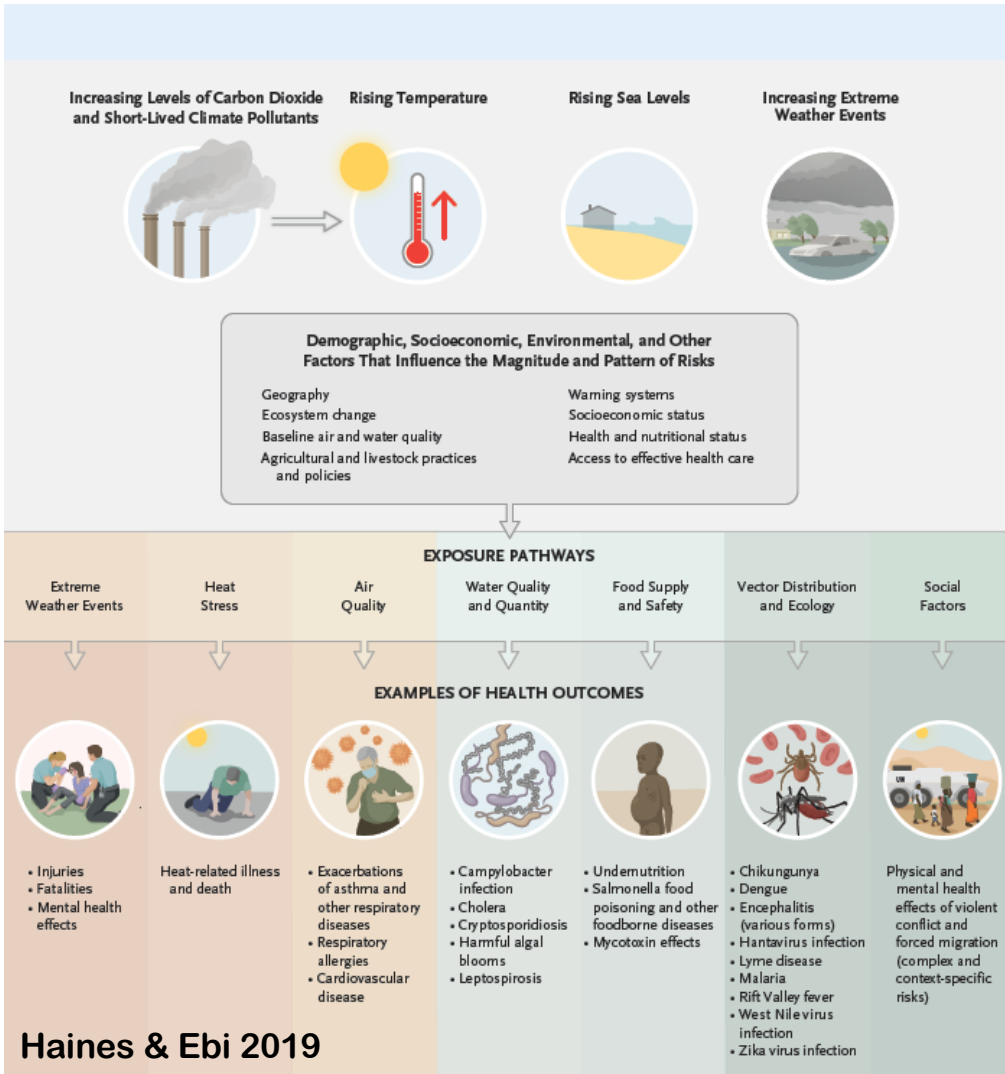
Human Health: Needs for Climate Information

Kristie L. Ebi, Ph.D., MPH
University of Washington

UW Medicine
SCHOOL OF MEDICINE

W
DEPARTMENT OF GLOBAL HEALTH
UNIVERSITY *of* WASHINGTON


SCHOOL OF PUBLIC HEALTH
UNIVERSITY *of* WASHINGTON



Ebi et al. 2021

Weather and climate data needed to:

- **Quantify the magnitude and burden of climate-sensitive health outcomes**
- **Estimate the extent to which climate change is already causing illness, injuries, and deaths**
- **Project the magnitude and pattern of health risks under a range of climate and development scenarios**
- **Develop, deploy, monitor, and evaluate the effectiveness of policies and measures to increase resilience of health systems and healthcare facilities**
- **Estimate the costs to individuals and health systems of the health risks of climate variability and change**
- **Estimate the health co-benefits of mitigation policies and technologies**