

Conference venue

Columbia University
Lerner Hall
2920 Broadway
New York City, NY 10027
USA

Conference website
www.sealevel2017.org



© E. Barroso



© B. Gilbert

Current conference sponsors

THE EARTH INSTITUTE
COLUMBIA UNIVERSITY



Contact

Scientific Chairs

Robert Nicholls (R.J.Nicholls@soton.ac.uk)
Detlef Stammer (detlef.stammer@uni-hamburg.de)
Roderik van de Wal (R.S.W.vandeWal@uu.nl)

Local Organization

Peter Schlosser (schlosser@ldeo.columbia.edu)



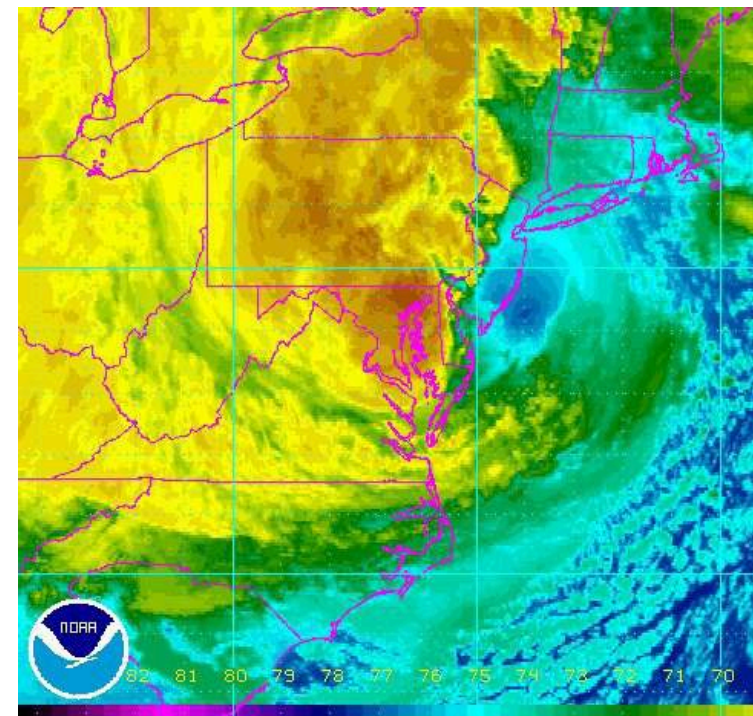
International WCRP/IOC Conference

Regional Sea Level Changes and Coastal Impacts

July 10-14, 2017

THE EARTH INSTITUTE
COLUMBIA UNIVERSITY

New York, NY, USA



Sea level change is already impacting coastal communities globally and will continue to do so.

To meet urgent societal needs for useful information on sea level, the World Climate Research Program (WCRP) has established the theme “Regional Sea-Level Change and Coastal Impacts”, as one of its cross-cutting “Grand Challenge” (GC) science questions.

The GC Sea Level has designed and developed an integrated interdisciplinary program on sea level research reaching from the global to the regional and coastal scales.

In particular, the program aims for close interaction with relevant coastal stakeholders to make sure that the results effectively support impact and adaptation efforts and wider coastal zone development and management.

The WCRP, jointly with the Intergovernmental Oceanographic Commission of UNESCO (IOC), is organizing an international conference on sea level research that will address the existing challenges in describing and predicting regional sea level changes, and in quantifying the intrinsic uncertainties.

It follows 11 years after the first WCRP sea level conference (Paris, 2006), and three years after the last Assessment Report of the Intergovernmental Panel on Climate Change (IPCC). It will provide a comprehensive summary of the state of worldwide climate-related large scale sea level research.

Science organizing committee

Co-Chairs

Robert Nicholls
Detlef Stammer
Roderik van de Wal

Members

Thorkild Aarup
Jérôme Benveniste
Anny Cazenave
John Church
Gonéri Le Cozannet
Catia Domingues
Natalya Gomez
Jonathan Gregory
Jochen Hinkel
David Holland
Kevin Horsburgh
Felix Landerer
Eric Lindstrøm

Kathy McInnes
Mark Merrifield
Benoit Meyssignac
R. Steven Nerem
Tony Payne
Rui Ponte
Peter Schlosser
Mark Tamisiea
Pietro Teatini
A. S. Unnikrishnan
Jianjun Yin
Kathleen White

Local organizing committee

Co-Chair

Peter Schlosser

Members

Gregory Fienhold
Jennifer Genrich
Mike Patterson
Maureen Raymo
Jill Reisdorf
Cynthia Rosenzweig
Detlef Stammer
Pamela Vreeland

The conference is a 5-day event with a leading theme guiding the activities of each day. The structure of the conference will consist of plenary sessions followed by extensive poster sessions. In the evenings we are planning to hold ,think-tanks‘ focusing on new science frontiers and activities.

Conference schedule

Time	Monday	Tuesday	Wednesday	Thursday	Friday
8 - 9 am	Registration				
9 - 11 am	Opening Session	Paleo & Cryosphere	Coastal Zone	Contemporary Sea Level Change	Projections
11 - 12.30 pm					Closing Session
12.30 - 2 pm	Lunch	Lunch	Lunch	Lunch	
2 - 4 pm	Paleo & Cryosphere	Contemporary Sea Level Change	Coastal Zone	Projections	Optional Field Trip
4 - 6 pm					
6 - 9 pm	Reception		Public and Outreach Event	Conference Dinner	

Conference outcome

The conference will serve as a basis for a new assessment of the state-of-the-art on regional sea level research that will be an important input to the next IPCC assessment.

A major outcome from the conference will therefore be an evaluation of the current state of sea level science, an outline of future research requirements for improving our understanding of sea level rise and variability and a description of the observational requirements (both experimental and sustained systematic observations).

The outcomes will be published in multiple forms, including an agenda setting peer-reviewed paper specifying the information on coastal sea level change required by coastal communities for adaptation and decision making purposes.

In detail the conference will:

I. Identify the key factors contributing to past, present and future regional sea level rise and variability.

II. Organize a systematic attack on the error budget of these factors.

III. Identify stakeholder needs for sea-level information for coastal planning and management purposes.

IV. Define the requirements for new and augmented research, technical development and observations consistent with the above.