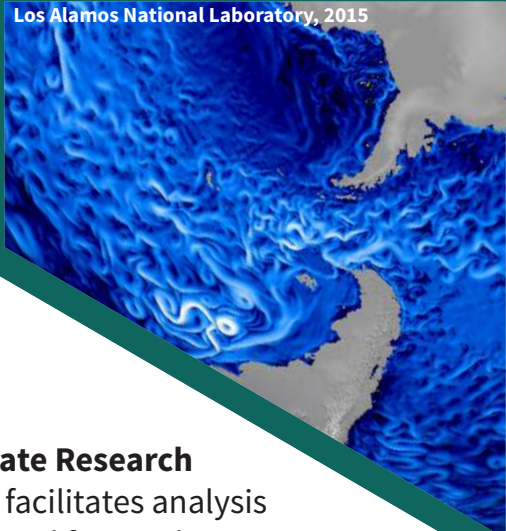


# WCRP

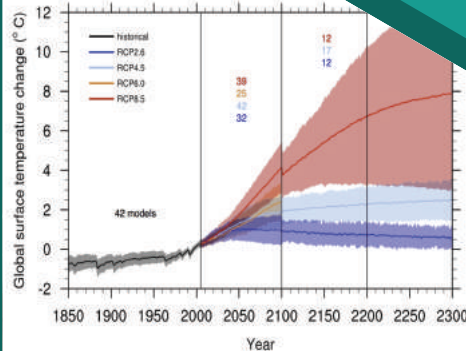


WORLD CLIMATE RESEARCH PROGRAMME

Los Alamos National Laboratory, 2015



CMIP  
The World Climate Research Programme's  
Coupled Model Intercomparison Project



IPCC, AR5, 2013, Figure 12.5



The **World Climate Research Programme (WCRP)** facilitates analysis and prediction of present and future climate. We support collaboration among researchers worldwide, open access to data and model products, and the next generation of climate scientists.

Discoveries and innovation from the WCRP research community feed into the **Coupled Model Intercomparison Project (CMIP)**, which produces cutting-edge climate projections.

These predictions enable the Intergovernmental Panel on Climate Change (IPCC) Assessment Reports and national assessments that governments use to plan for future climate.

To ensure that you have reliable climate information when you need it, we ask for your investment in WCRP – so that the skills and products of the WCRP community can continue to meet the urgency of climate change.

# 2016

- National contributions in 2016** supported many WCRP projects and activities, including:
- New research, data products and **model predictions** to inform regional, national and international climate assessments
  - Two new **Grand Challenges** – on Carbon Feedbacks in the Climate System and on Near-term (Decadal) Climate Prediction
  - **International conferences** on regional climate and on the future of climate and ocean research
  - Support for over 50 **workshops, conferences and meetings** and three **summer schools**
  - Support of **early career scientists** – travel funding and symposiums
  - **Prizes** for data and model development

# 2017

WCRP will continue to build new partnerships and deliver fundamental climate research – meeting the challenges of a fast-changing climate.

**Your support is critical**

In the spirit of the Paris Agreement we ask you to invest in understanding future climate, in the knowledge that it will benefit each and every citizen of your country.

**Contact:**  
[wcrp@wmo.int](mailto:wcrp@wmo.int)  
[www.wcrp-climate.org](http://www.wcrp-climate.org)