

“Future of Climate Modeling” WCRP Workshop Summary

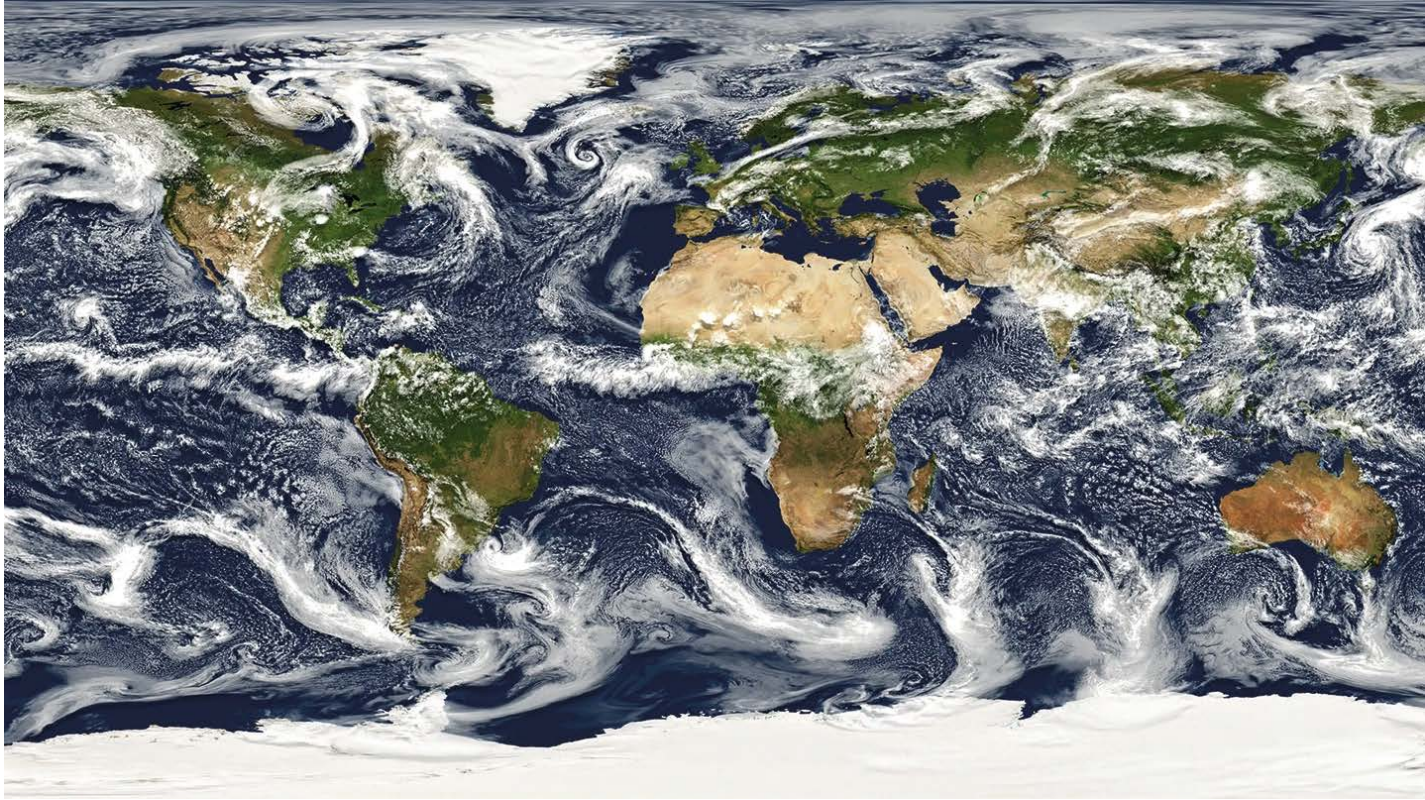
Piers Forster and Vaishali Naik

On behalf of JSC Chairs and Workshop participants

Need of The Hour

1. **Detailed, improved, and actionable climate change information** for the society and decision-makers to help
 - a. Transition to **net-zero emissions**
 - b. Make informed **adaptation, mitigation and CDR decisions** now and adequately insure against climate related losses
2. **Advancements in climate science**, including improved process understanding and enhanced model developments to help achieve #1

A suggested solution: global k-scale climate model for reliable climate prediction



Slingo et al., Nature, 2022

However,...

- Investment in a bigger computer does not necessarily guarantee reliable climate prediction
 - Persistent biases in large scale circulation, climate sensitivity, aerosol-cloud interactions
 - Parameterizations still needed and error-prone
- Advances in Earth System processes and interactions using very high resolution models are challenging
 - E.g., slowly evolving processes
- Investment in a bigger computer in of itself may not help constrain projections or lead to capacity-building or a diverse workforce...

WCRP Workshop on Future of Climate Modeling

- **GOAL:** Identify as a community the key contemporary challenges for climate modelling and create a **roadmap for reliable, accessible and useful climate model systems** that will allow us to rise to major new challenges for climate research by exploring opportunities for climate modelling that exist now and into the coming decades
- Participants from **across our community**, and sessions consisted of invited presentations by a diverse group of speakers with different science and applications backgrounds, career stages and geographic regions, representing state-of-the-art modelling efforts from within and outside WCRP to provide a broad perspective and innovative views
- Specific questions discussed during the workshop:
 - What are the main priorities for climate model improvements and developments?
 - What are the main model requirements to cope with societal needs for climate information?
 - Which technical developments are required to cope with future hardware generations?
 - How does WCRP needs to adjust its modelling approaches to meet scientific and societal challenges?

Initial draft of the WCRP report

A Roadmap for accessible, useful and realistic climate model systems

1. Current Climate Modelling Landscape

Summary of sessions and breakout group compiled by session chairs and rapporteurs

2. Our vision of where we want to be by [2030, 2050]

3. How do we get there?

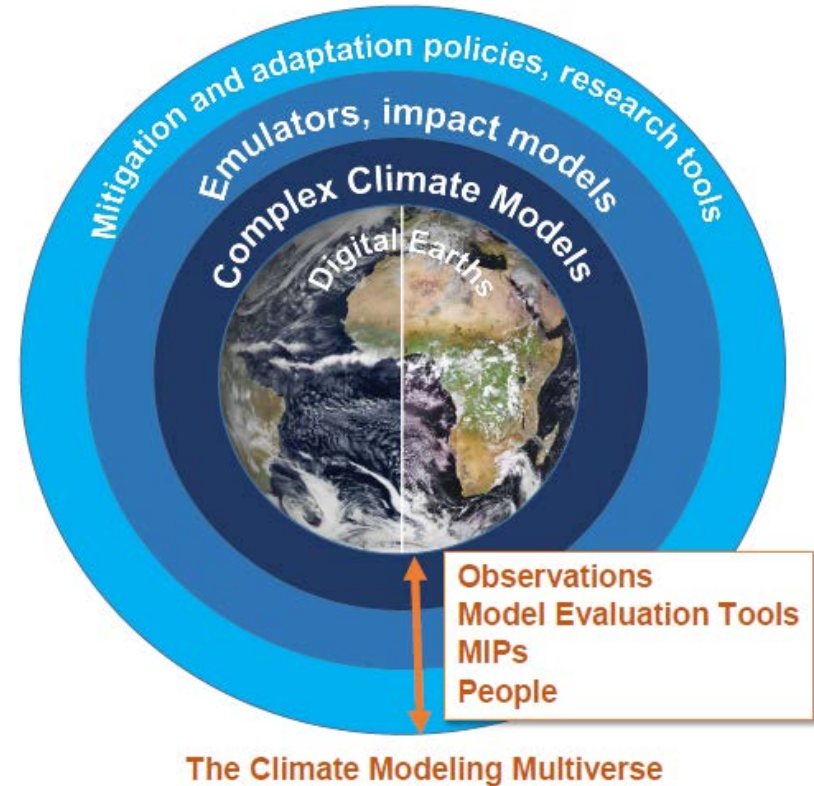
4. Specific recommendations to WCRP

Initial draft will be shared with the workshop participants to capture diversity and ensure cross-community consensus

2. Our vision of where we want to be by [2030, 2050]

“A ***multiverse*** of climate models (with associated infrastructure and a skilled workforce) that are **fit for purpose** to advance the **societally relevant and actionable science** needed for a sustainable present and future.”

Collaborate, Coordinate and Co-design



3. How do we get there: eight dimensions of change?

1. Enhance scientific fidelity and model evaluation

use of observations, parameterisation development, Turing"/"Carlaw" tests, improved process modelling, uncertainty identification and reduction

1. Become flexible, responsive and innovative

Develop a multiverse of approaches; Agile suites of modelling tools; flexibility over who does what: national centres, international collaborative efforts, universities, private sector. Partnerships..

1. Grow the diversity of workforce

Agile and diverse workforce; meaningful partnerships with Global south that will lead to co-design and modelling capabilities, novel careers, skills...

1. Move from collaboration to coordination

WCRP play a coordination role to focus efforts and improve efficiencies; new partnerships to maximize science and societal benefits; better harness private sector

3. How do we get there?

5. Improve accessibility and usability

data protocols and model analysis tools working across suites of models, easy entry points, how to guides, health warnings, outreach....

6. Establish co-design

Ensuring we address societal relevant questions, timing of IPCC WGs, include human systems in modelling efforts, more coordination with Future Earth/impact modellers etc.

7. Professionalise operational aspects and climate services

better supported, longer timescale development cycle, increase transparency, improve emulators/downscaling, improve feedback into research, co-design

8. Achieve net zero climate resilient modelling

Set a leading example: monitor, report, pathway for modelling centres and researcher activities

4. Previsional specific recommendations to WCRP

1. Play a coordinating role to broaden the global climate modeling effort and enhance the diversity of approaches for climate modeling
2. Capacity build the global south climate scientists as future leaders
3. Launch and coordinate a process understanding campaign with obs4MIPs to design and improve climate model fidelity
4. Coordinate uniform and interoperable model evaluation tools and metrics for model-obs and model-model comparisons
5. WCRP can lead on interacting with funders to support a wider set of climate modelling approaches, including private funders.
6. Promote co-design and wider stakeholder input by linking with other programs more effectively.
7. Launch a World Climate Operational Programme
8. Take the lead in developing a climate resilient net-zero emission pathway for the global climate modelling community.

Questions for discussion and what is the ask to WCRP to focus on?

1. Where can biggest gains be made: near term predictions, hydrological cycle, machine learning, vulnerable regions, tipping points...
2. How best to connect across modelling approaches, observations and stakeholders: Digital Earths, Complex ESMs, emulators, co design with stakeholders, partnerships ...
3. How many of the different model types do we need and where should they be, and who should run them?
 - Also how many digital earths, global climate models and emulators are needed? Over 50 global models and still counting!
 - Continental modelling hubs or distributed multinational single model collaborations feeding national climate service infrastructures?
4. Digital infrastructure and skills

WCRP report

A Roadmap for accessible, useful and realistic climate model systems

Design principles

- Make a clear recommendation to WCRP
- Be as transparent as possible: capture diversity and run a consultation
- Report itself should set an example and not be siloed into communities

2. Where do we want to be by [2030, 2050]? our vision

- “A “multiverse” of climate models (and associated infrastructure and a skilled workforce) that are fit for purpose to advance the societally relevant and actionable science needed for a sustainable present and future.”

OUTLINE FOR WCRP REPORT

Aim: A call for a step change in global coordination of the climate modelling effort for impactful, urgent and net zero science delivery that meets the needs of global society

1. Current Climate Modelling Landscape

Sessions and BOGs will become sections: chairs, speakers rapporteurs to author + others as necessary

2. Where do we want to be by [2030, 2050]? our vision

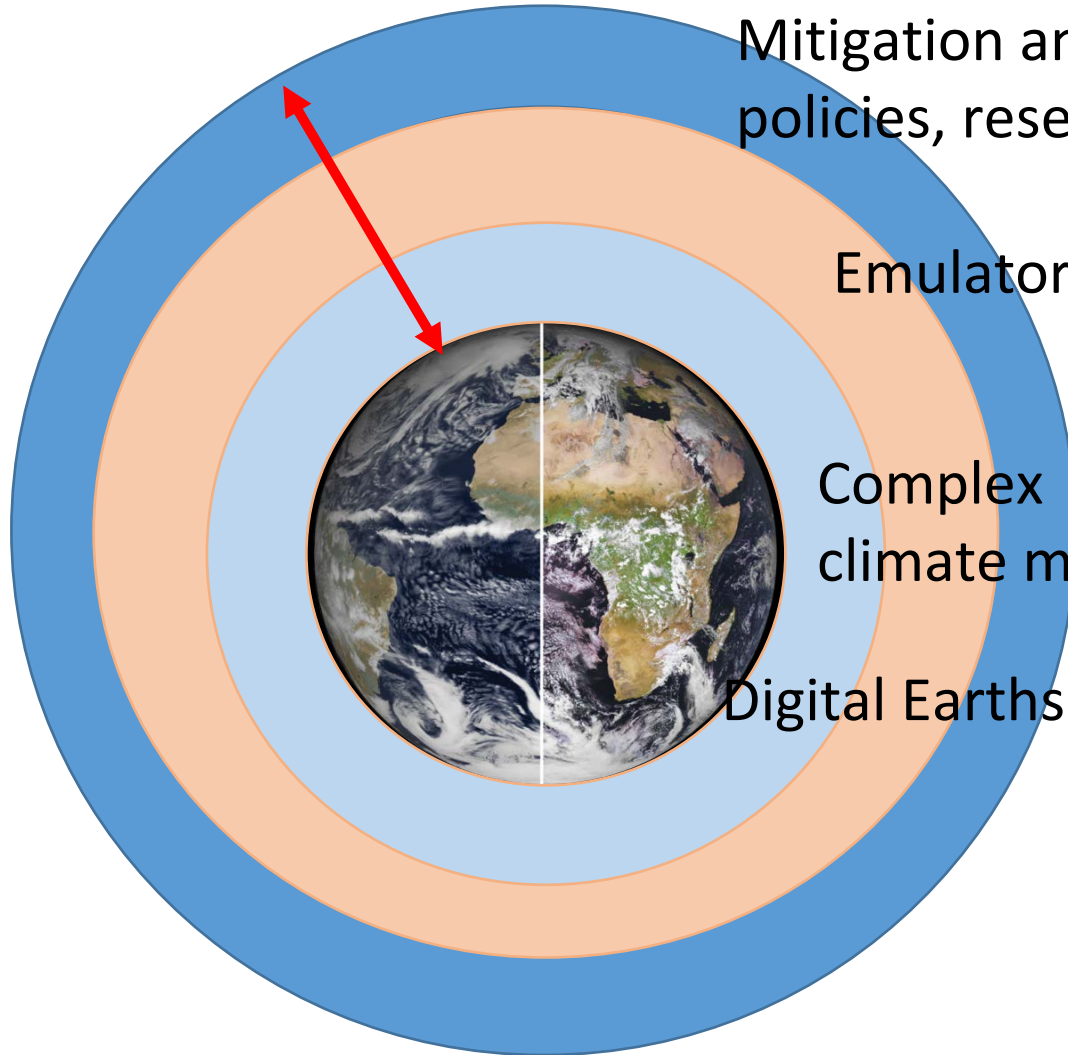
3. How do we get there?

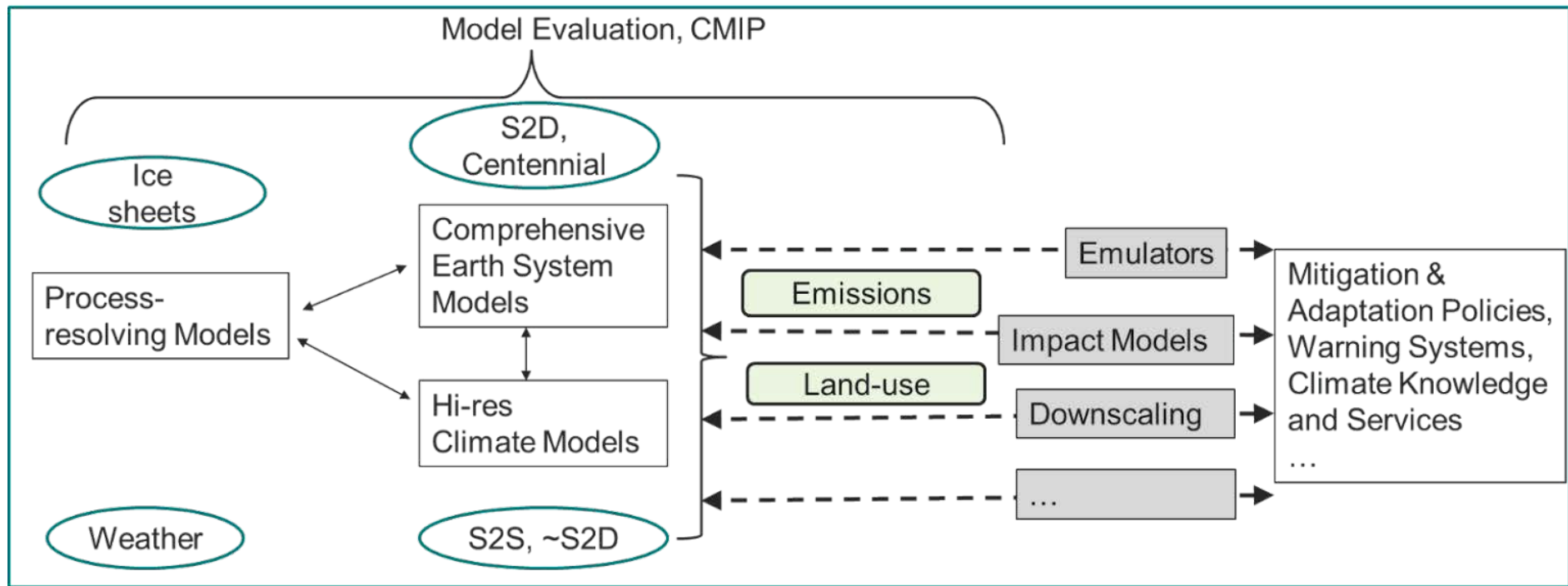
4. Specific recommendations to WCRP

Green is where we think we have good high-level agreement

The climate modelling multiverse

Observations,
MIPS, model
evaluation tools
and people work
across the
multiverse;
Co-design





← CO-DESIGN →

3. How do we get there?

Step changes are needed

1. Accessibility; 2. Scientific fidelity; 3. Usability and usefulness; 4. Capacity building.

Develop a multiverse of approaches

System mindset, more cooperation between global modelling centres and/or a centralised model infrastructure

Become flexible, responsive and innovative

Agile suites of modelling tools; flexibility over who does what: national centres, international collaborative efforts, universities, private sector. Partnerships..

Improve capacity, diversity and career pathways

Global south led co-design and modelling capabilities, novel careers, skills...