



# futureearth

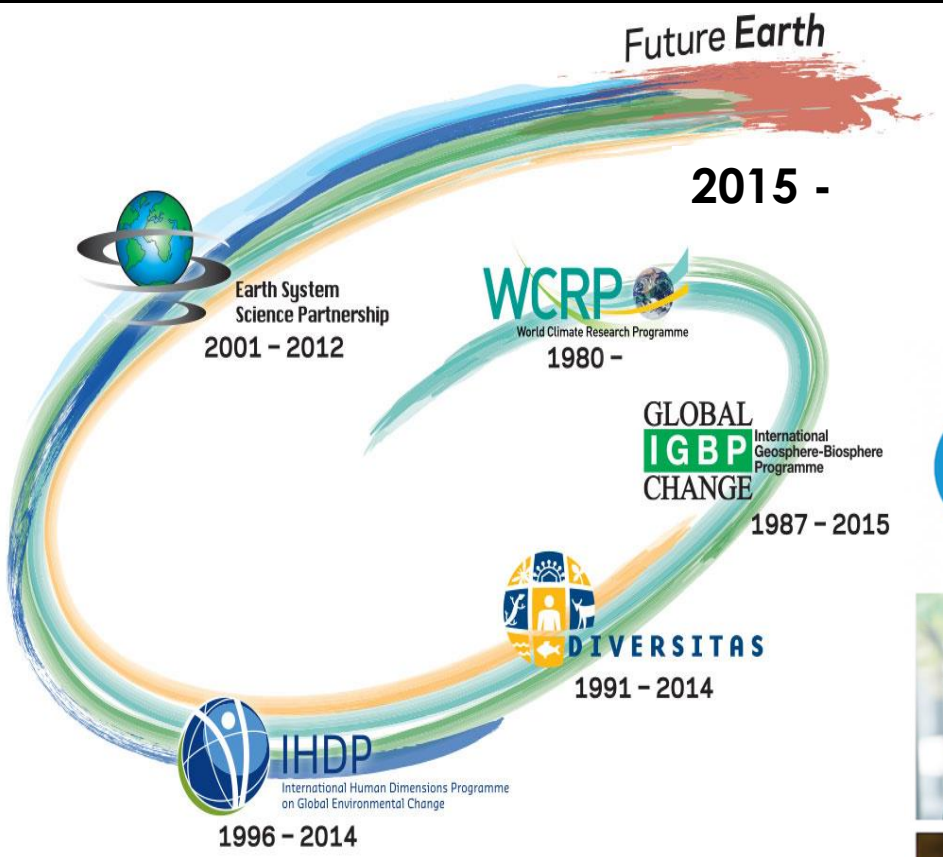
Research. Innovation. Sustainability.

## A BRIEF OVERVIEW

WHO WE ARE | WHAT WE DO

Amy Luers  
Executive Director

BUILD ON 30 YEARS OF INTERNATIONAL COLLABORATION IN CHANGE RESEARCH



# GOVERNING COUNCIL



Global HUB sponsors: Quebec, France Japan, Sweden USA





















**Advisory Committee**

futurearth

futurearth

# WHAT WE DO

# WHAT WE DO



**Facilitate Research**  
ON Global Systemic Challenges



**Build the Field**  
Sustainability research & innovation



**Shape the Narrative**  
Sound science in discourse





# BUILDING THE FIELD

OF RESEARCHERS AND INNOVATORS COLLABORATING ON GLOBAL SUSTAINABILITY

## Transdisciplinary Convenings



Towards a Sustainable Water Future  
September 24 - 27, 2019  
Bengaluru, India



## Supporting funding for transdisciplinary research



Webinar for the Belmont Forum / Future Earth  
Climate, Environment and Health CRA: Community Building  
2019-04-24

## Early-Career



## Global Leadership Program





# SHAPING THE NARRATIVE

ENSURING SOUND SCIENCE IS IN POLICY AND BUSINESS DISCOURSES

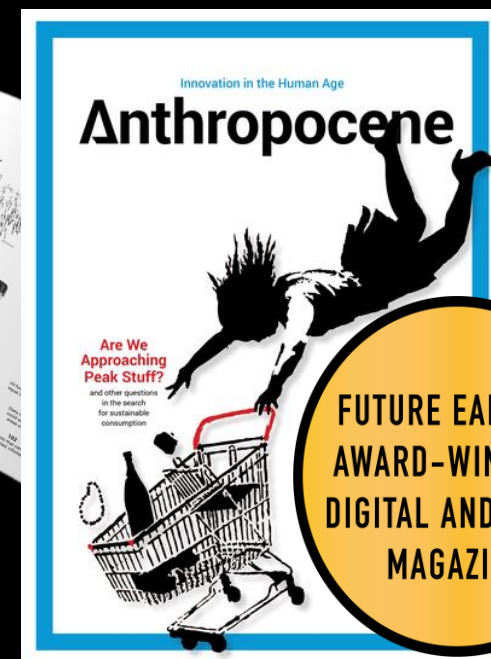
## Rapid response to policy requests

Requested by Patricia Espinosa for Climate COP



## Anthropocene Magazine

A thought-leader publication for the sustainability and development world



FUTURE EARTH'S  
AWARD-WINNING  
DIGITAL AND PRINT  
MAGAZINE

# WHAT WE DO



**Facilitate Research**  
ON Global Systemic Challenges



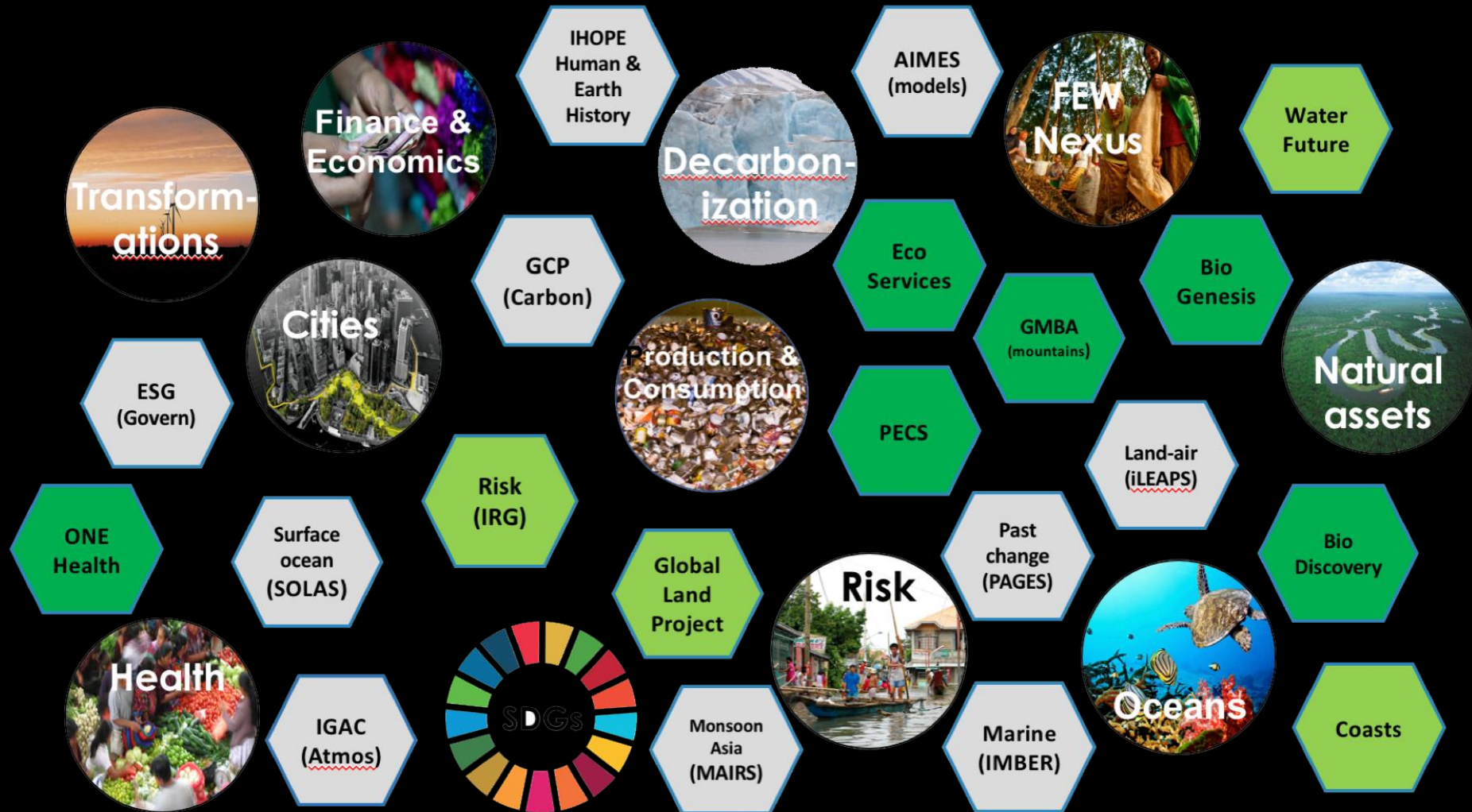
**Build the Field**  
Sustainability research & innovation



**Shape the Narrative**  
Sound science in discourse



# GROUNDING IN 20+ GLOBAL RESEARCH PROJECTS & KNOWLEDGE-ACTION NETWORKS





# WORKING TO ACCELERATE TRANSFORMATIONS TO GLOBAL SUSTAINABILITY

## GLOBAL SYSTEMIC CHALLENGES:

Cross-cutting societal challenges no one group can work alone.





# GLOBAL SYSTEMIC CHALLENGES

**1.1. Earth Targets** : Whole Earth system assessment of targets for sustainability – to support business and urban action

**2. Societal Transformations for Climate Action:**  
Building a science action plan

# "Universal, inclusive and indivisible"

## HOW TO CONNECT LOCAL AND SECTORAL DECISIONS TO EMPOWER WHOLE EARTH ACTIONS



# futureearth

Research. Innovation. Sustainability.

## SCIENCE-BASED TARGETS NETWORK



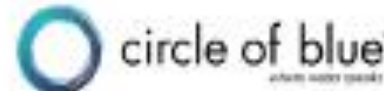
Quantis



SYSTEMIQ



WE MEAN BUSINESS



futureearth  
research for global sustainability







# GLOBAL SYSTEMIC CHALLENGES



# Science-based pathways

Start locally with science & policy context



Bringing science to help  
shape local pathways and targets  
working with partners in **co-design**

# And then.....

## Link globally with science & policy context



# SCIENCE FOR INTEGRATED EARTH TARGETS



Save the date!

## JOURNEE FUTURE EARTH

CENTRE NATIONAL DE LA  
RECHERCHE SCIENTIFIQUE

9 MAI 2019 - 9H00-17H30







# GLOBAL SYSTEMIC CHALLENGES

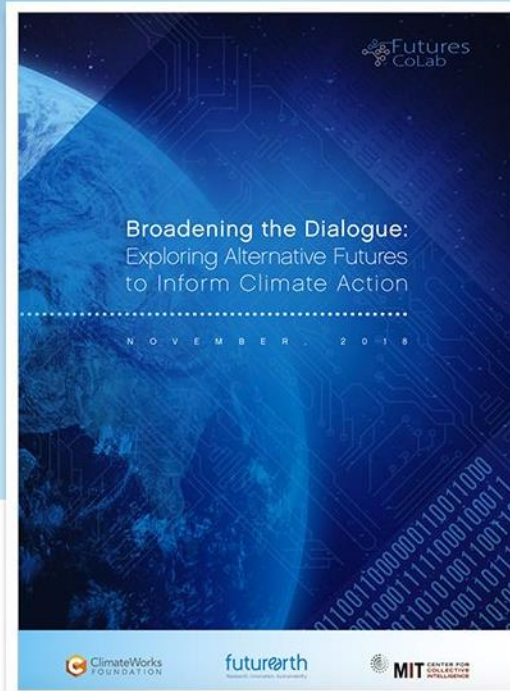
1. **Earth Targets** : Whole Earth system assessment of targets for sustainability – to support business and urban action

2. **Societal Transformations for Climate Action:**  
Building a science action plan

**JUST STARTING TO DEFINE**  
*Societal Transformations on Climate Action*

# EXPLORING WITH PARTNERS TRANSFORMATIONS OPPORTUNITIES

New report explores potential climate opportunities and risks ahead.



futurearth

Sustainability  
in the Digital Age



futurearth

*How can WCRP and Future Earth deepen collaborations?*

## Global Systemic Challenges

- Earth Targets: Science-based pathways
- Societal Transformations on Climate Action

